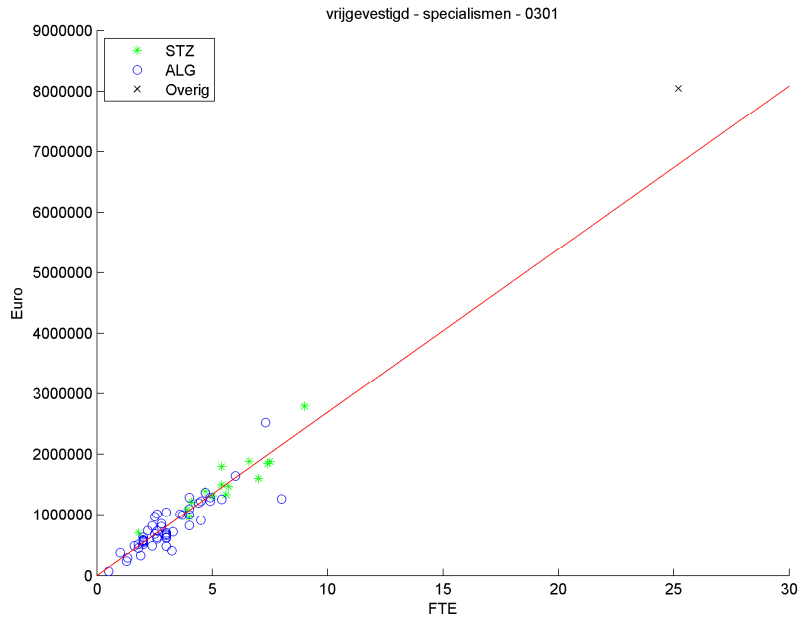
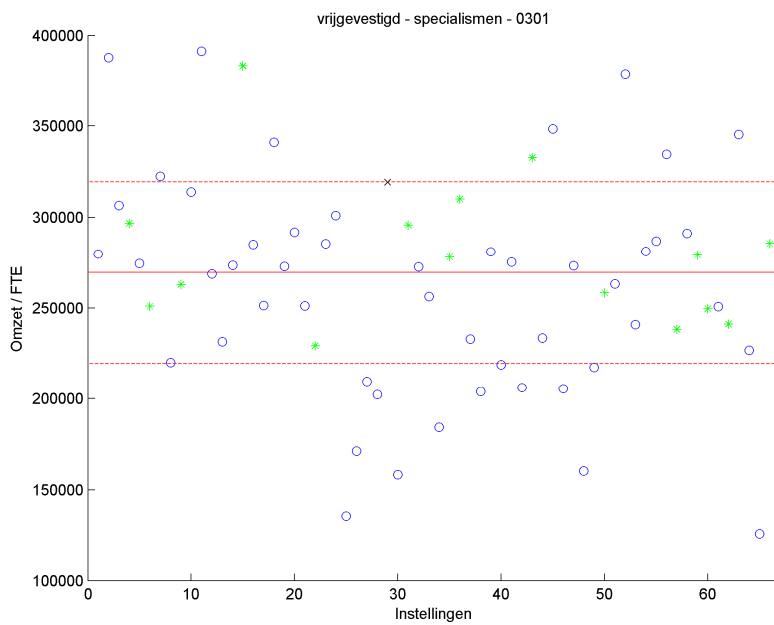


Impactanalyses vrijgevestigde medisch specialisten

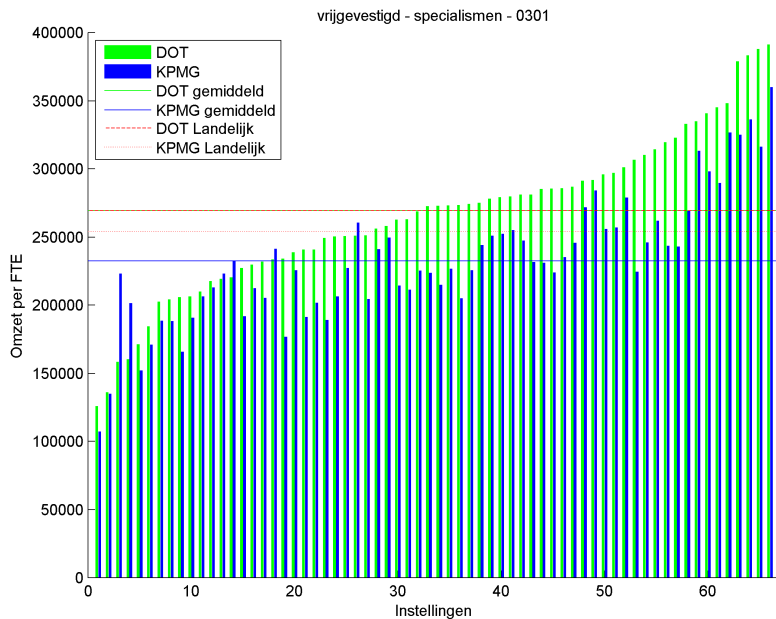
0301 - Oogheelkunde



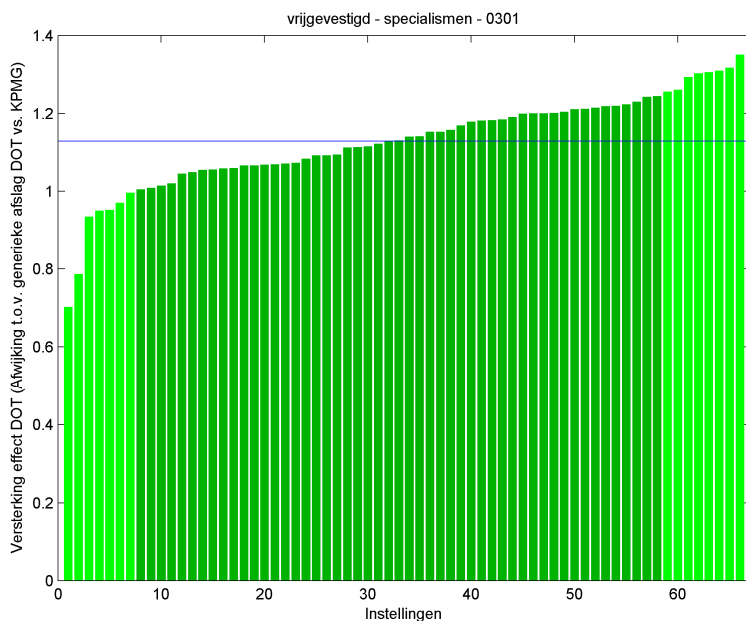
Figuur 1: Relatie honorariumomzet en FTE



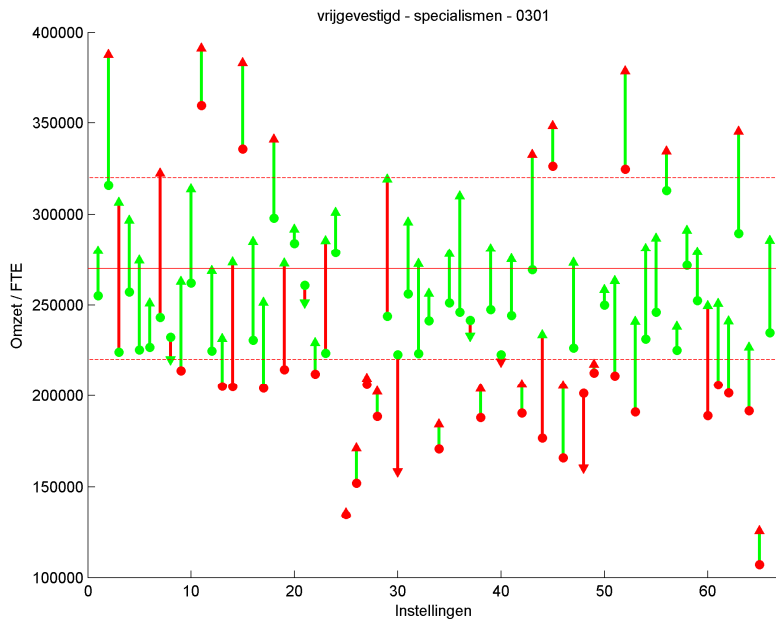
Figuur 2: Omzet per FTE ten opzichte van gemiddelde



Figuur 3: Omzet DBC 2011 (KPMG) en DOT 2012



Figuur 4: Omzetverschuiving van 2011 naar 2012



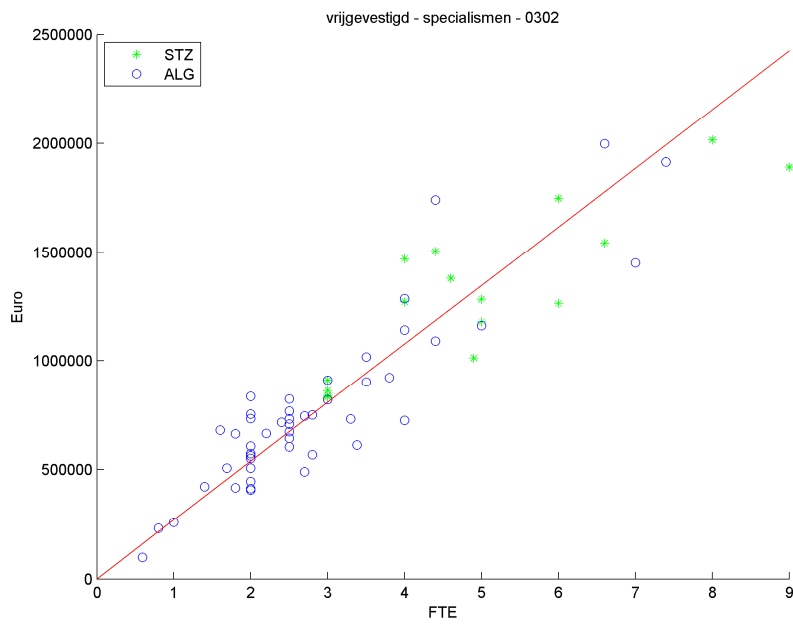
Figuur 5: Omzetverschuiving t.o.v. absolute waarde

Omzet per FTE

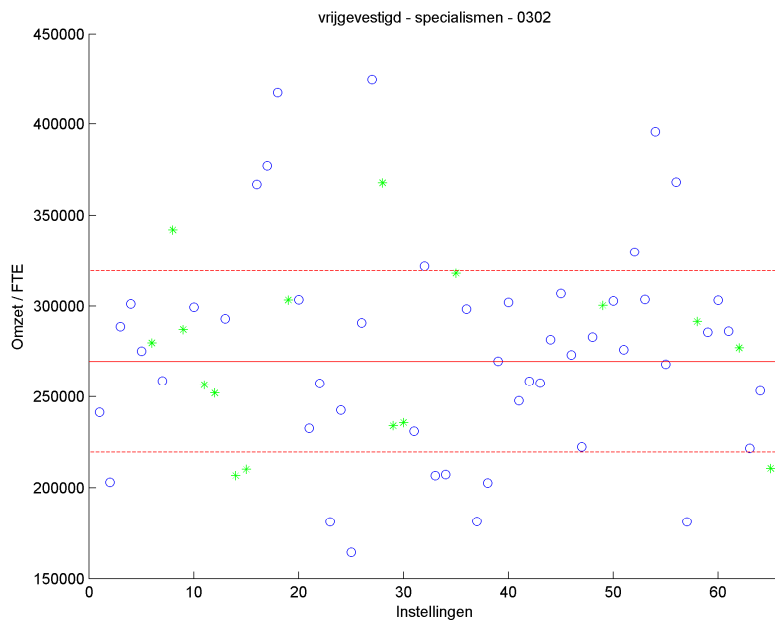
	< 220000	gemiddeld	> 320000
< 1 std	4	3	0
gemiddeld	9	33	9
> 1 std	0	7	1

Tabel 1: Uitbijters

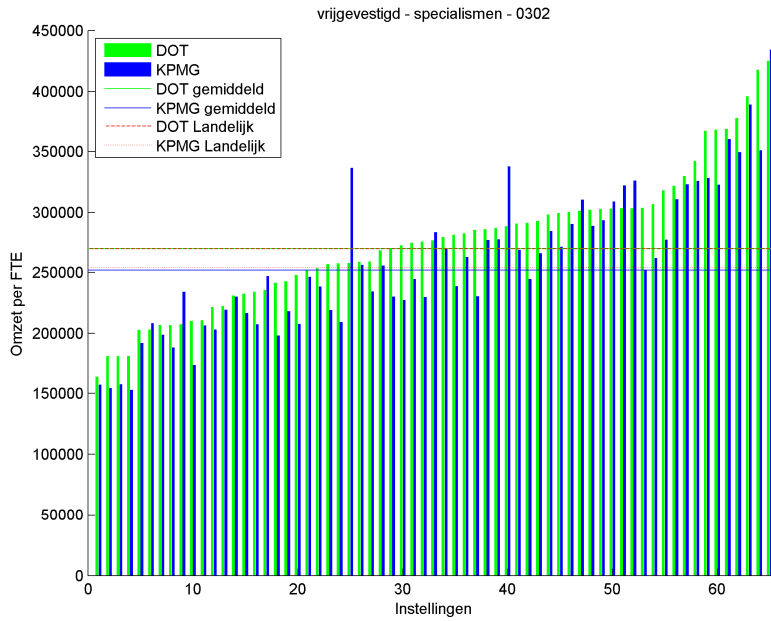
0302 - KNO-heelkunde



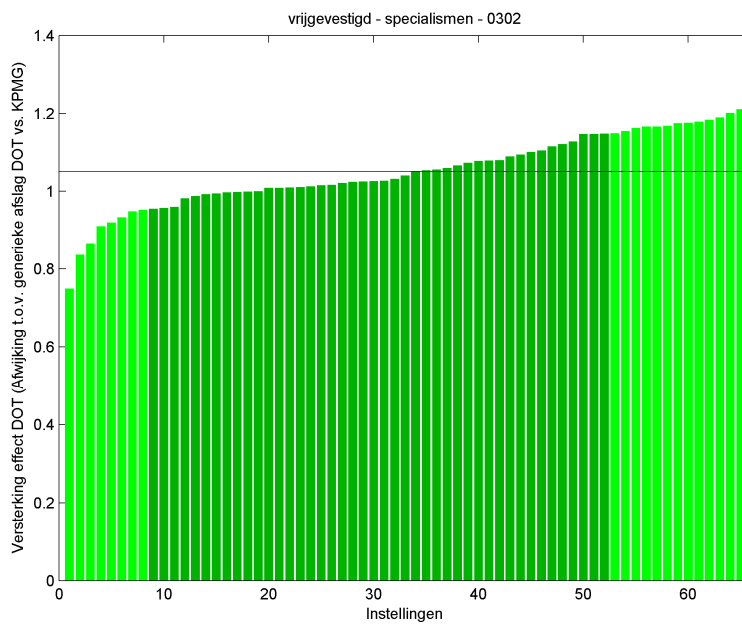
Figuur 6: Relatie honorariumomzet en FTE



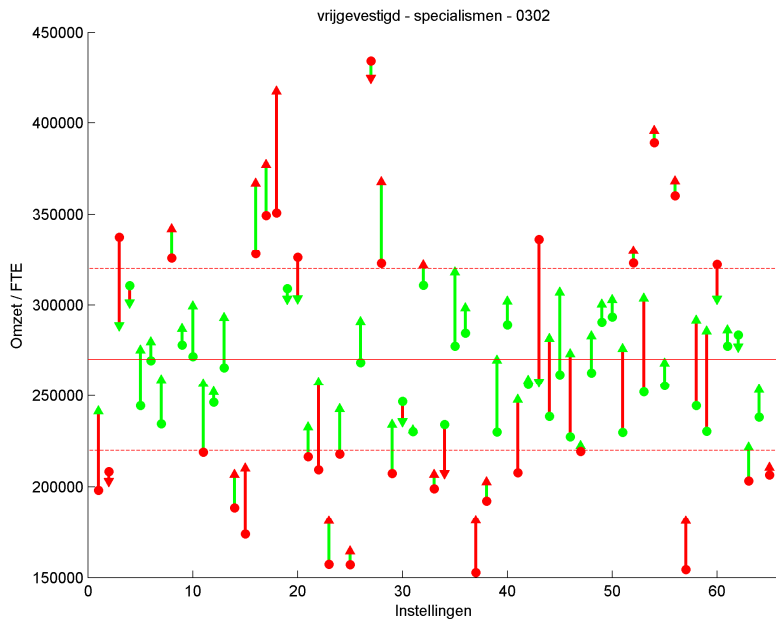
Figuur 7: Omzet per FTE ten opzichte van gemiddelde



Figuur 8: Omzet DBC 2011 (KPMG) en DOT 2012



Figuur 9: Omzetverschuiving van 2011 naar 2012



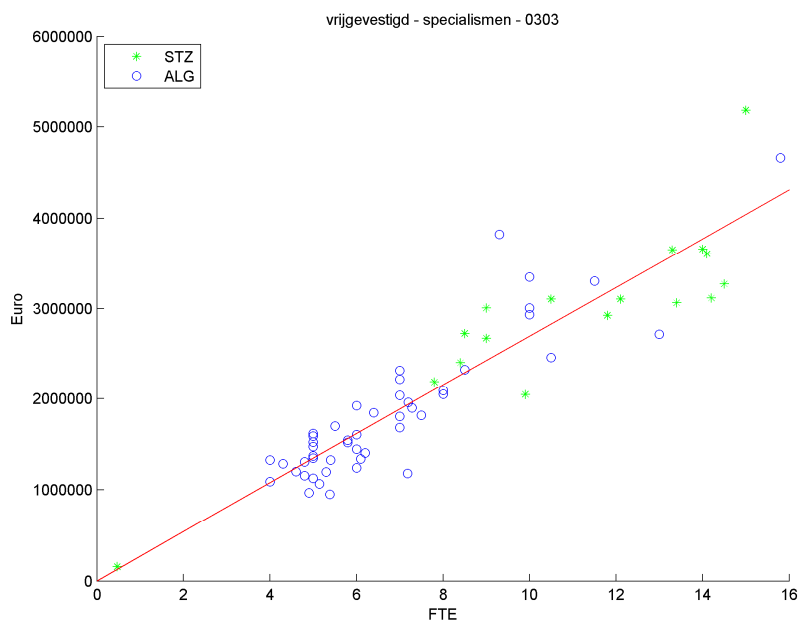
Figuur 10: Omzetverschuiving t.o.v. absolute waarde

Omzet per FTE

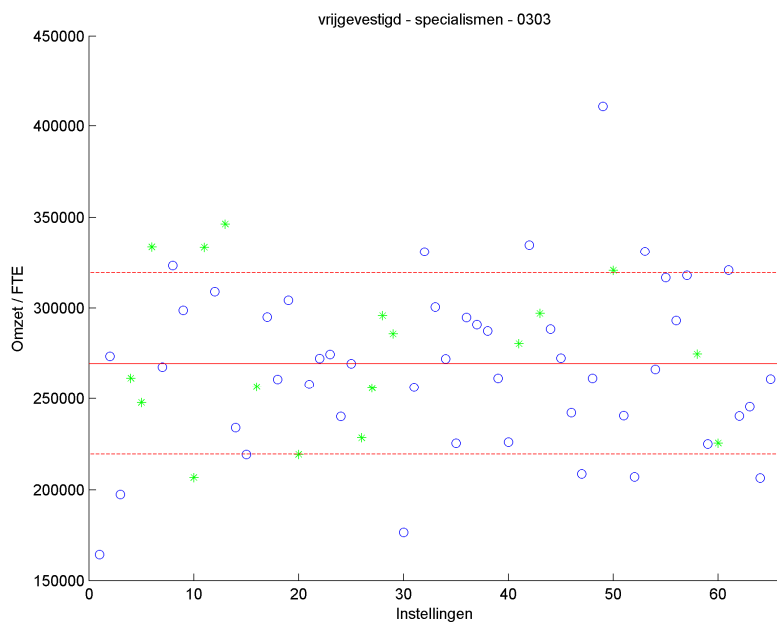
	< 220000	gemiddeld	> 320000
< 1 std	2	6	0
gemiddeld	6	29	9
> 1 std	3	9	1

Tabel 2: Uitbijters

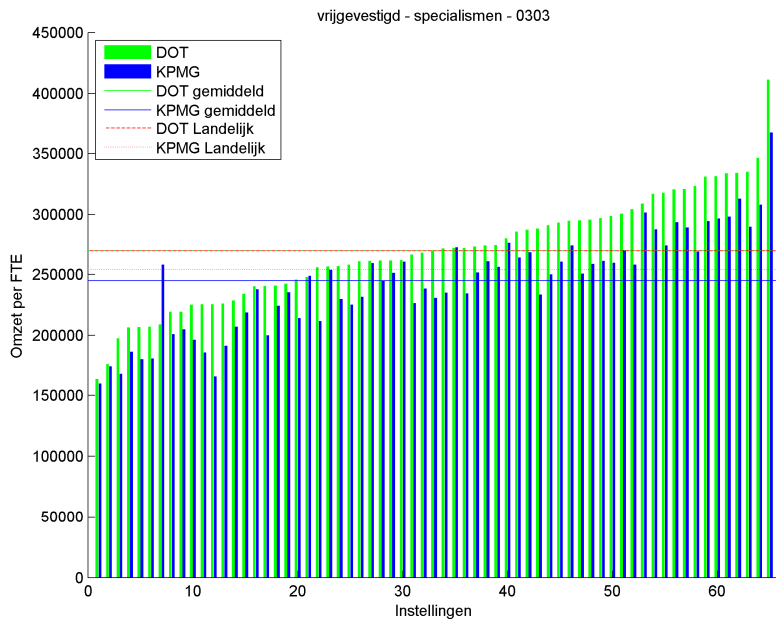
0303 - Chirurgie



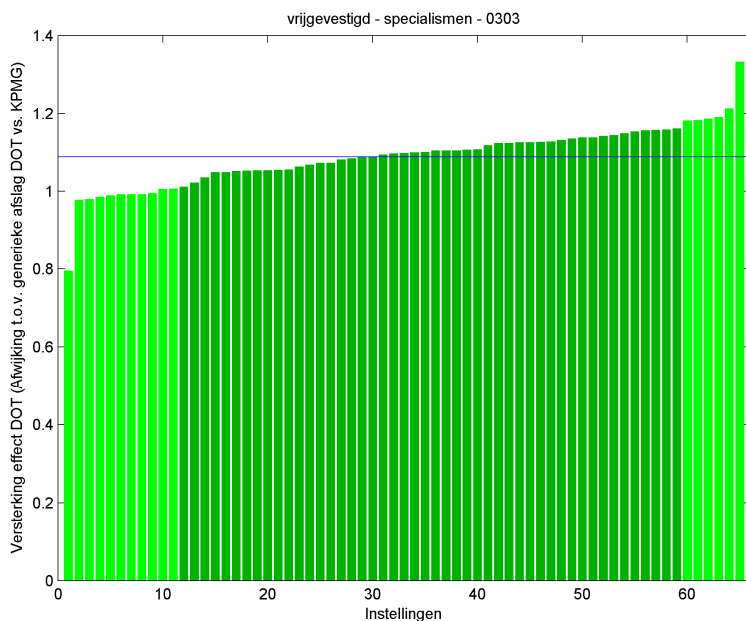
Figuur 11: Relatie honorariumomzet en FTE



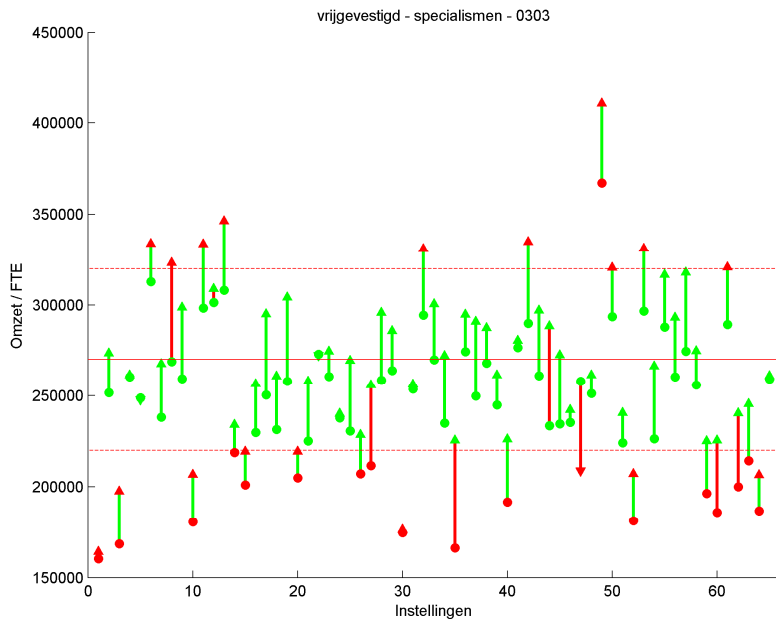
Figuur 12: Omzet per FTE ten opzichte van gemiddelde



Figuur 13: Omzet DBC 2011 (KPMG) en DOT 2012



Figuur 14: Omzetverschuiving van 2011 naar 2012



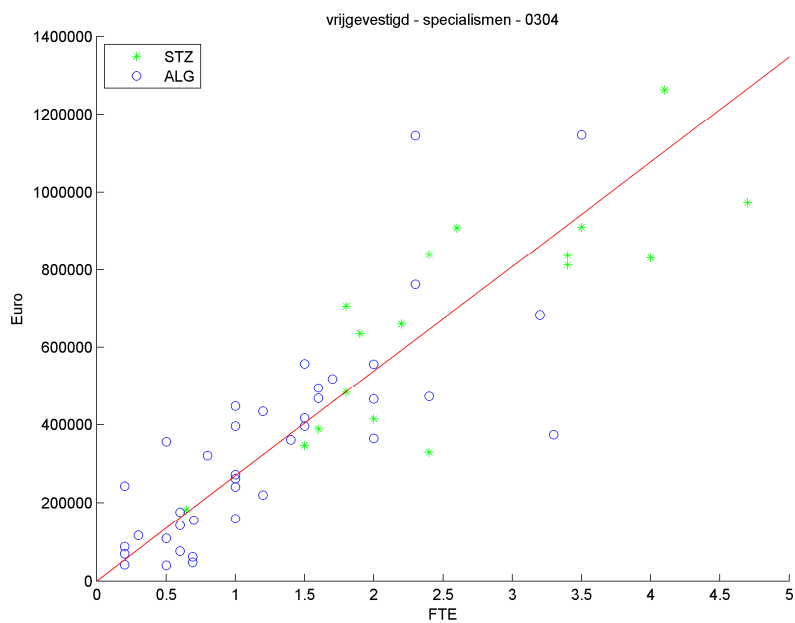
Figuur 15: Omzetverschuiving t.o.v. absolute waarde

Omzet per FTE

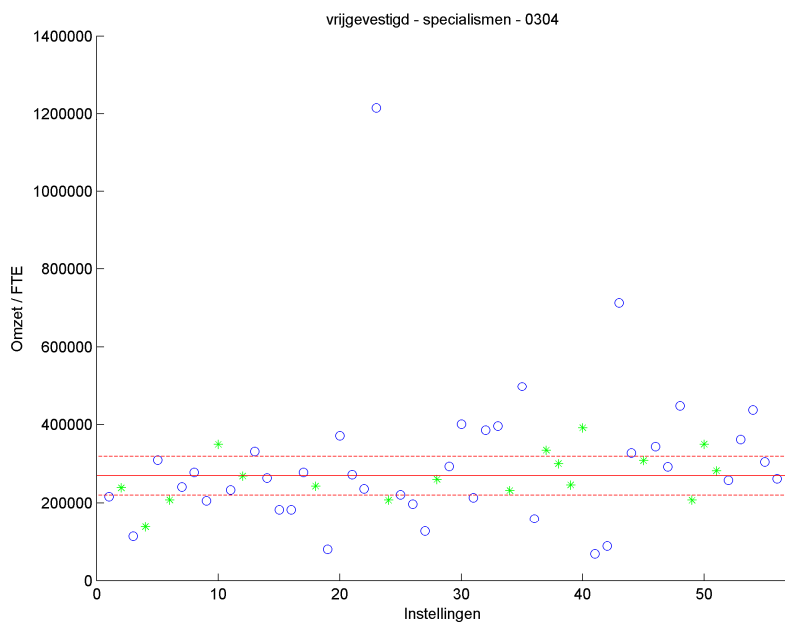
	< 220000	gemiddeld	> 320000
< 1 std	3	8	0
gemiddeld	6	33	9
> 1 std	0	5	1

Tabel 3: Uitbijters

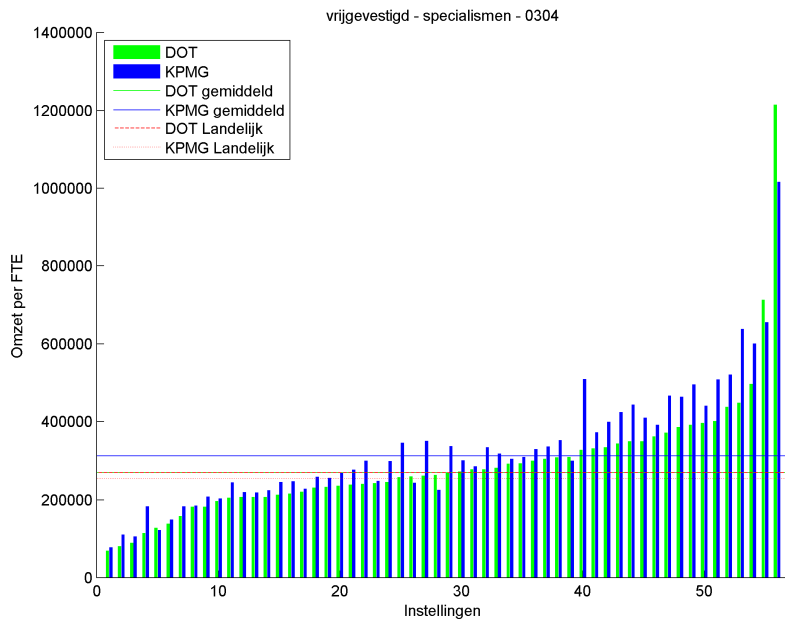
0304 - Plastische chirurgie



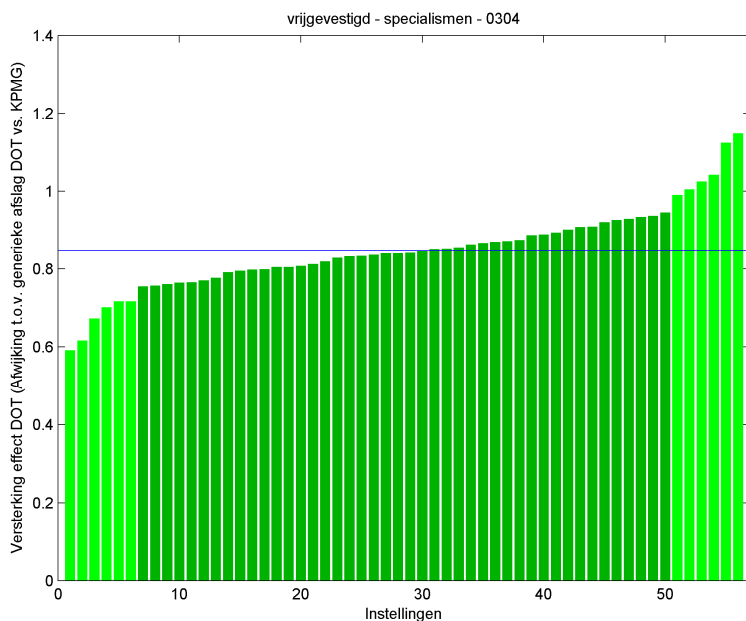
Figuur 16: Relatie honorariumomzet en FTE



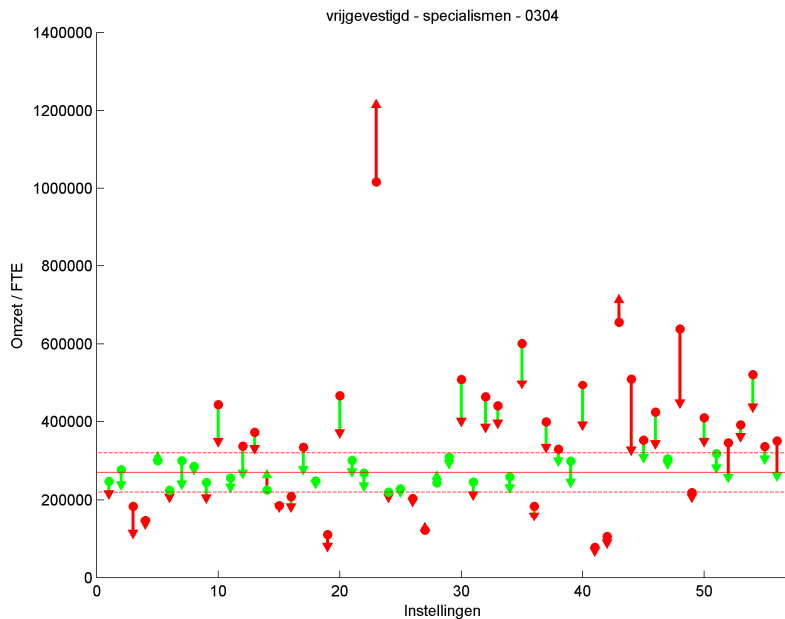
Figuur 17: Omzet per FTE ten opzichte van gemiddelde



Figuur 18: Omzet DBC 2011 (KPMG) en DOT 2012



Figuur 19: Omzetverschuiving van 2011 naar 2012



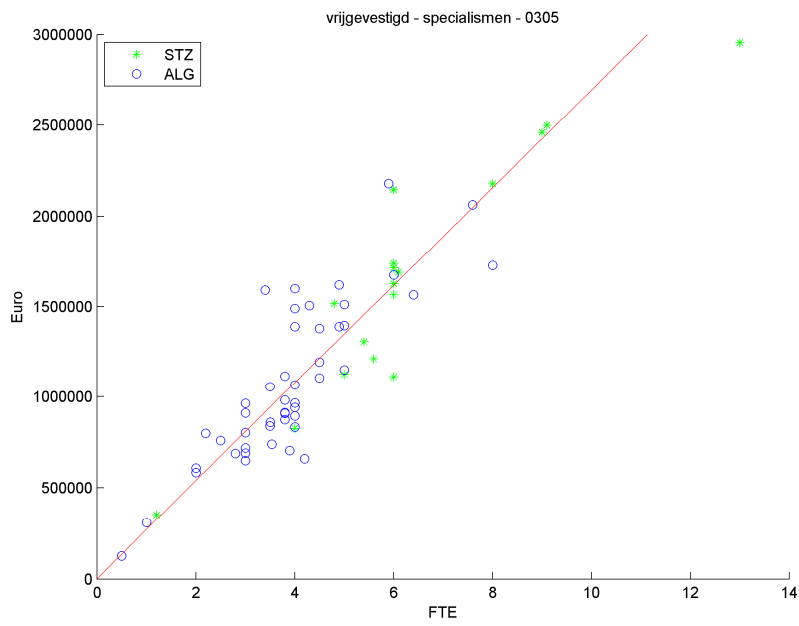
Figuur 20: Omzetverschuiving t.o.v. absolute waarde

Omzet per FTE

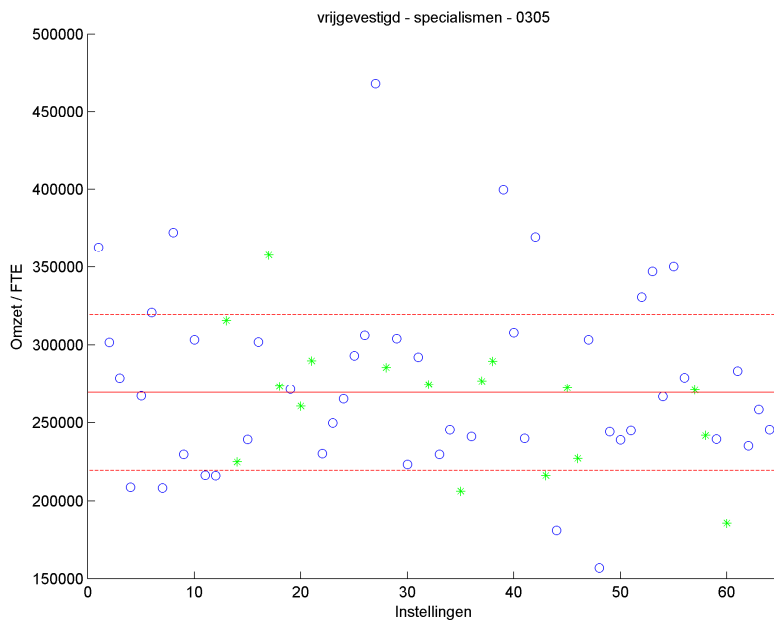
	< 220000	gemiddeld	> 320000
< 1 std	2	2	2
gemiddeld	13	18	13
> 1 std	1	3	2

Tabel 4: Uitbijters

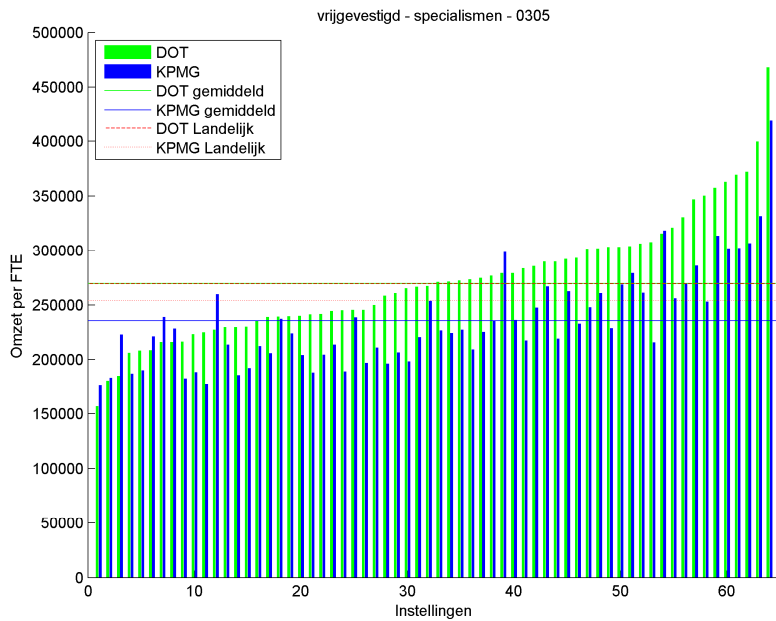
0305 - Orthopedie



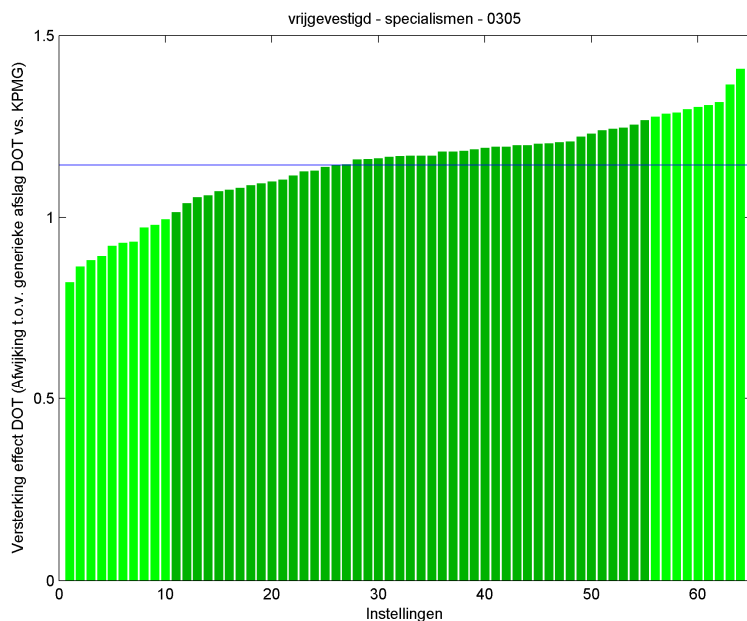
Figuur 21: Relatie honorariumomzet en FTE



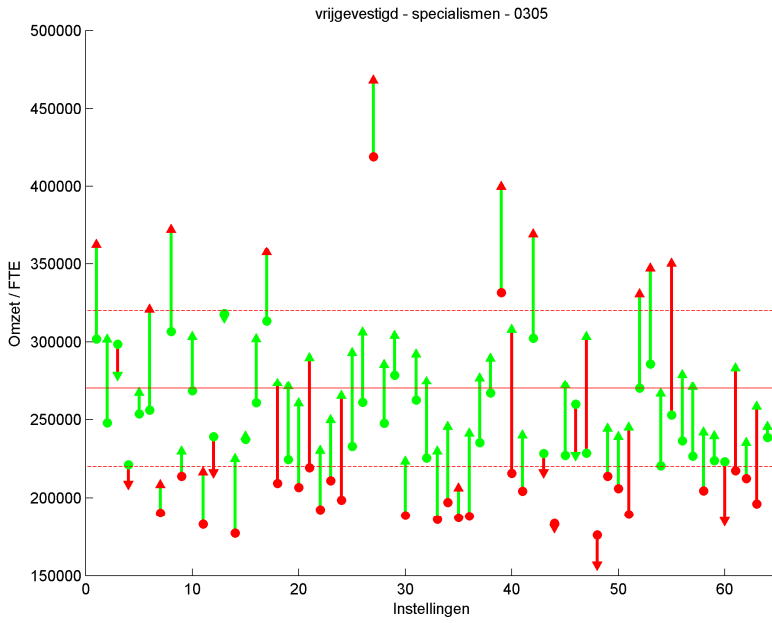
Figuur 22: Omzet per FTE ten opzichte van gemiddelde



Figuur 23: Omzet DBC 2011 (KPMG) en DOT 2012



Figuur 24: Omzetverschuiving van 2011 naar 2012



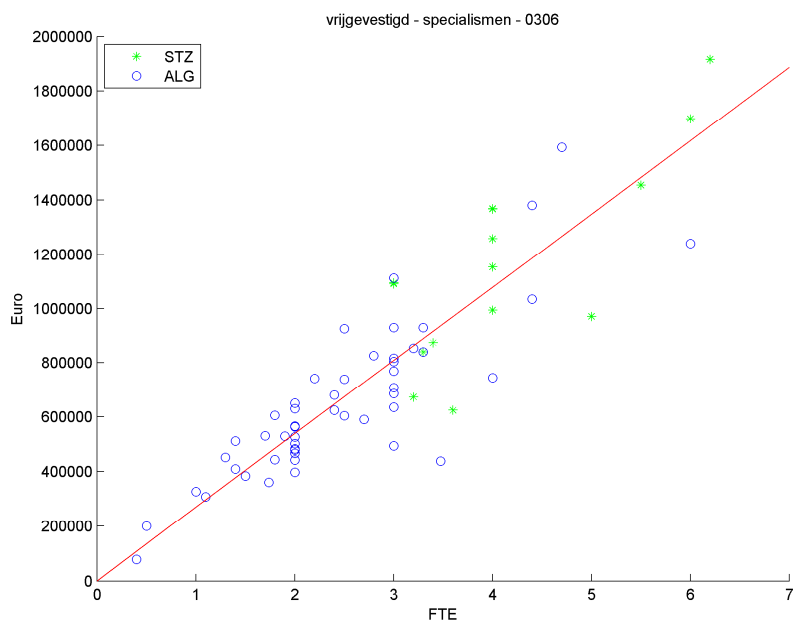
Figuur 25: Omzetverschuiving t.o.v. absolute waarde

Omzet per FTE

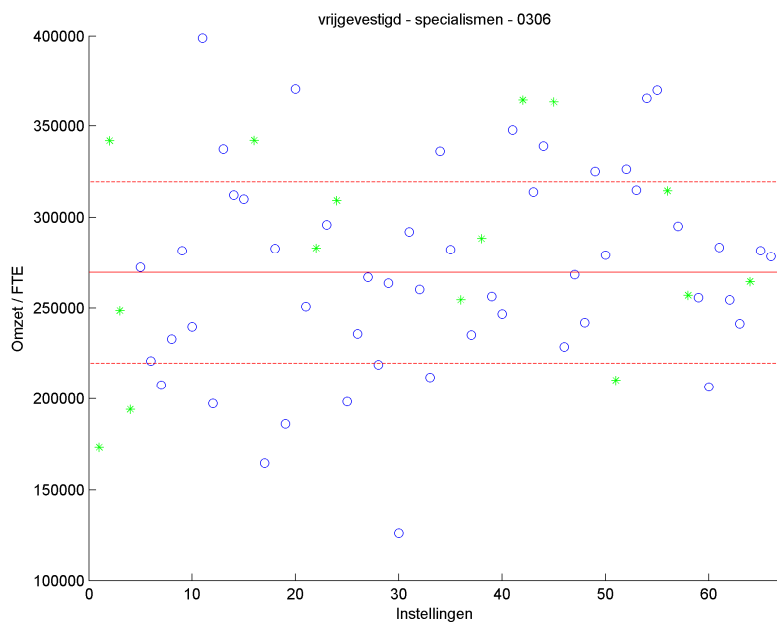
	< 220000	gemiddeld	> 320000
< 1 std	6	4	0
gemiddeld	3	33	9
> 1 std	0	8	1

Tabel 5: Uitbijters

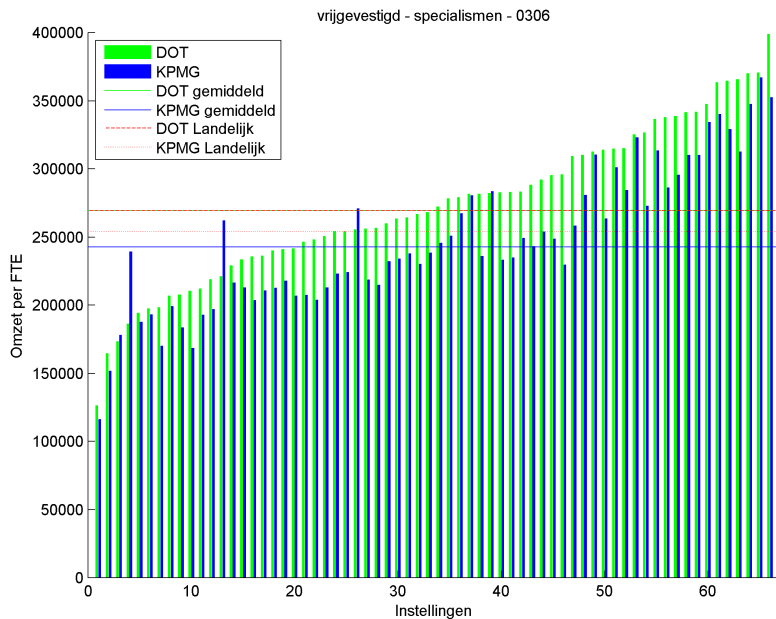
0306 - Urologie



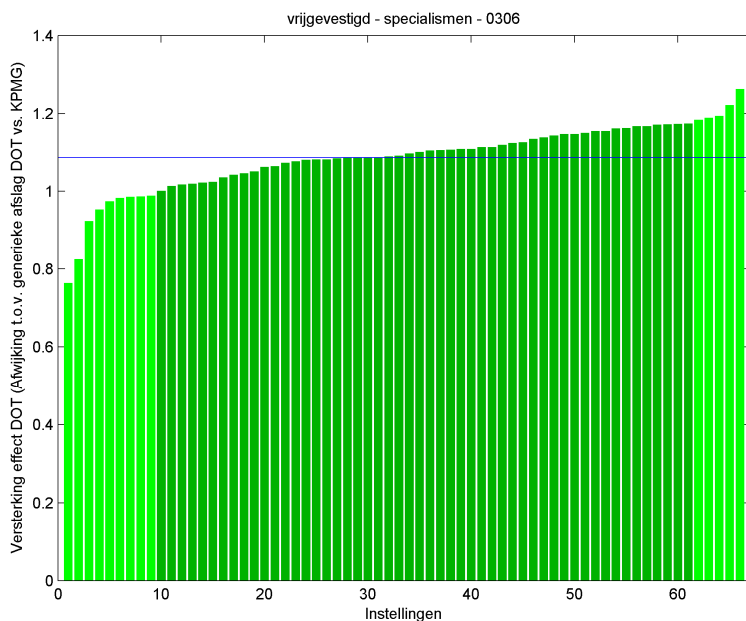
Figuur 26: Relatie honorariumomzet en FTE



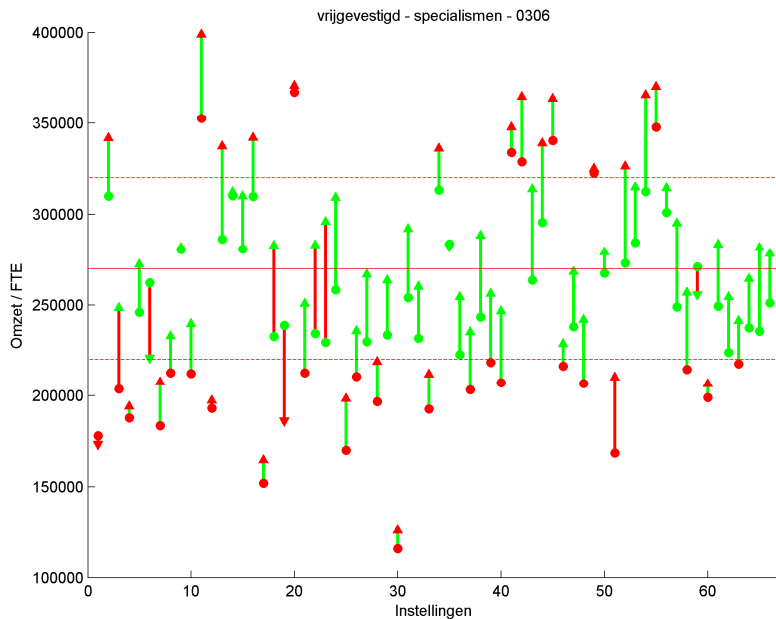
Figuur 27: Omzet per FTE ten opzichte van gemiddelde



Figuur 28: Omzet DBC 2011 (KPMG) en DOT 2012



Figuur 29: Omzetverschuiving van 2011 naar 2012



Figuur 30: Omzetverschuiving t.o.v. absolute waarde

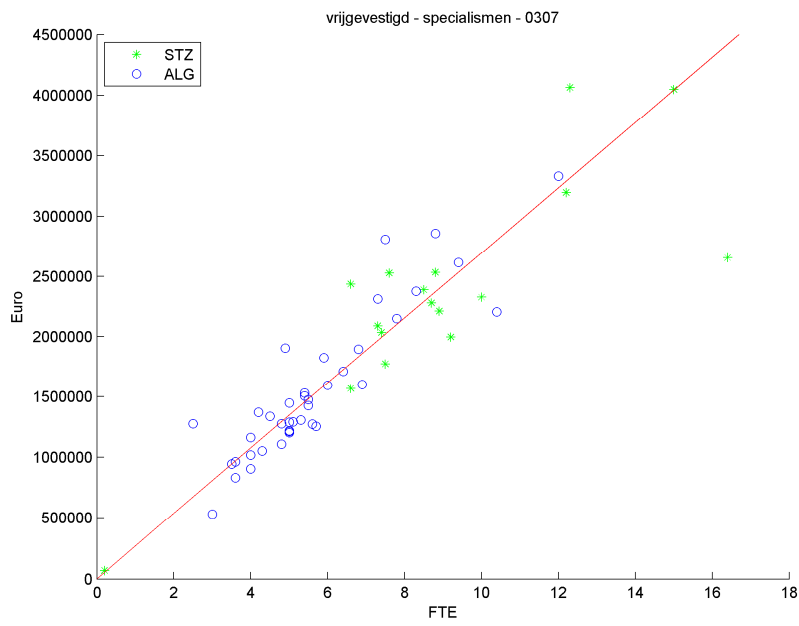
Omzet per FTE

< 220000 gemiddeld > 320000

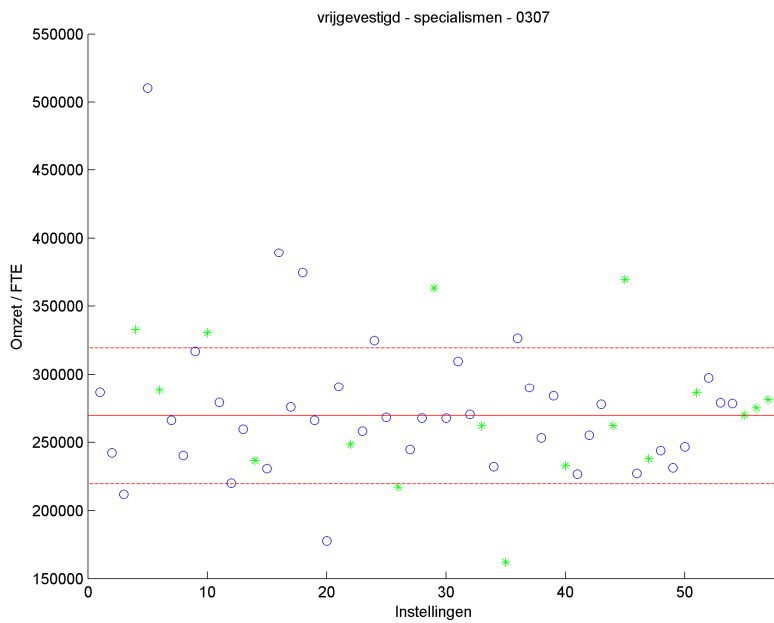
< 1 std	2	5	2
gemiddeld	9	31	12
> 1 std	1	4	0

Tabel 6: Uitbijters

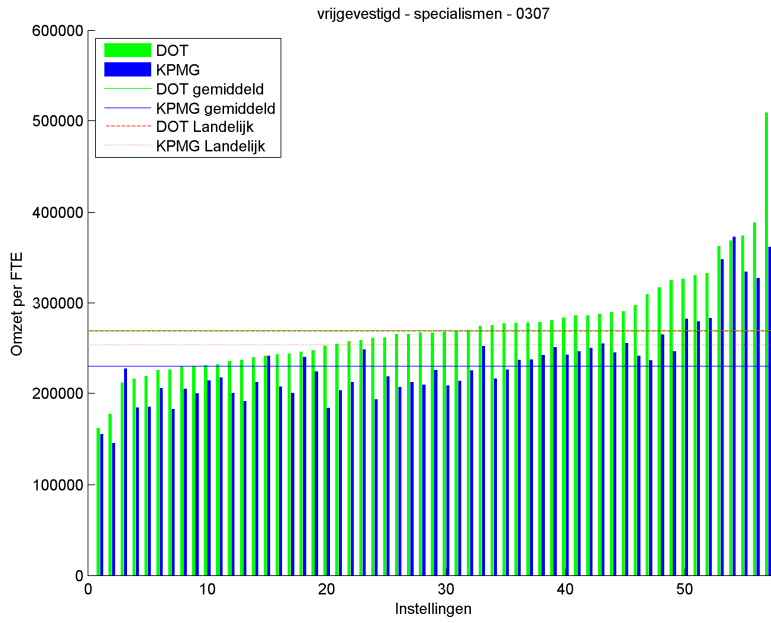
0307 - Gynaecologie



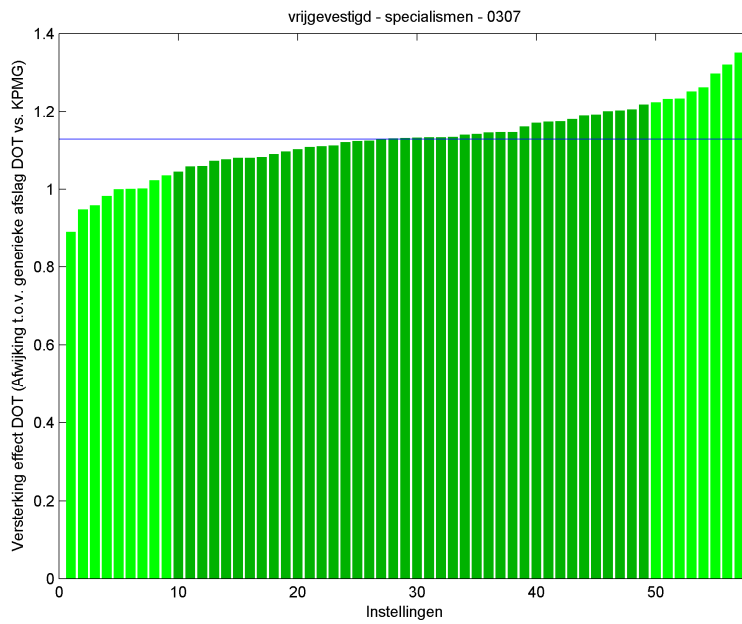
Figuur 31: Relatie honorariumomzet en FTE



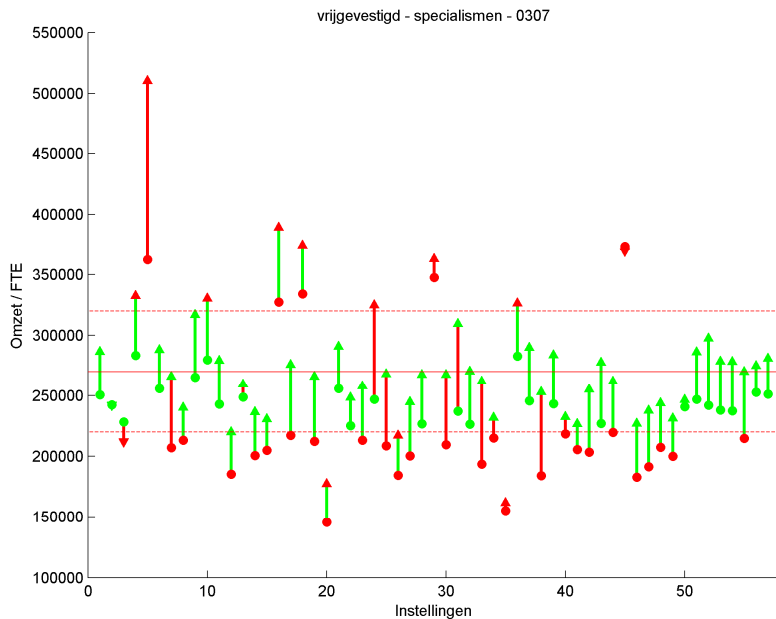
Figuur 32: Omzet per FTE ten opzichte van gemiddelde



Figuur 33: Omzet DBC 2011 (KPMG) en DOT 2012



Figuur 34: Omzetverschuiving van 2011 naar 2012



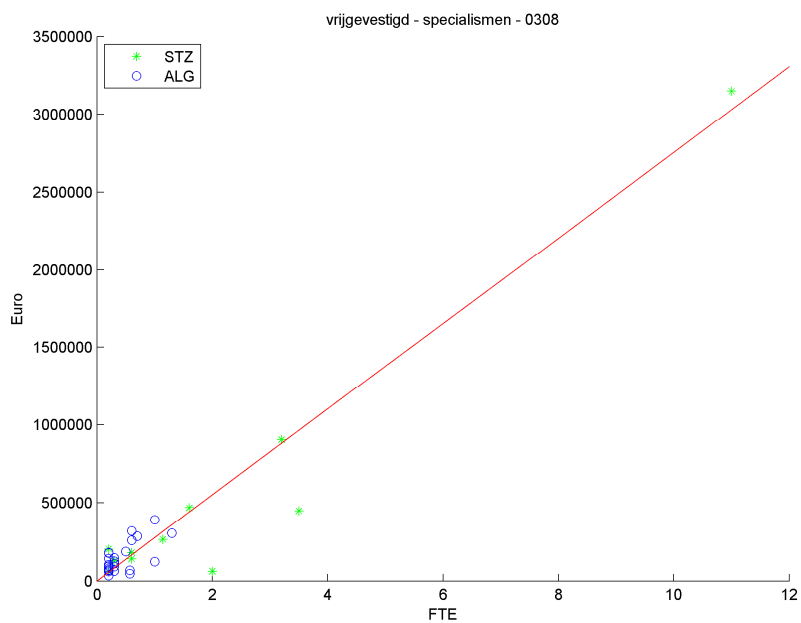
Figuur 35: Omzetverschuiving t.o.v. absolute waarde

Omzet per FTE

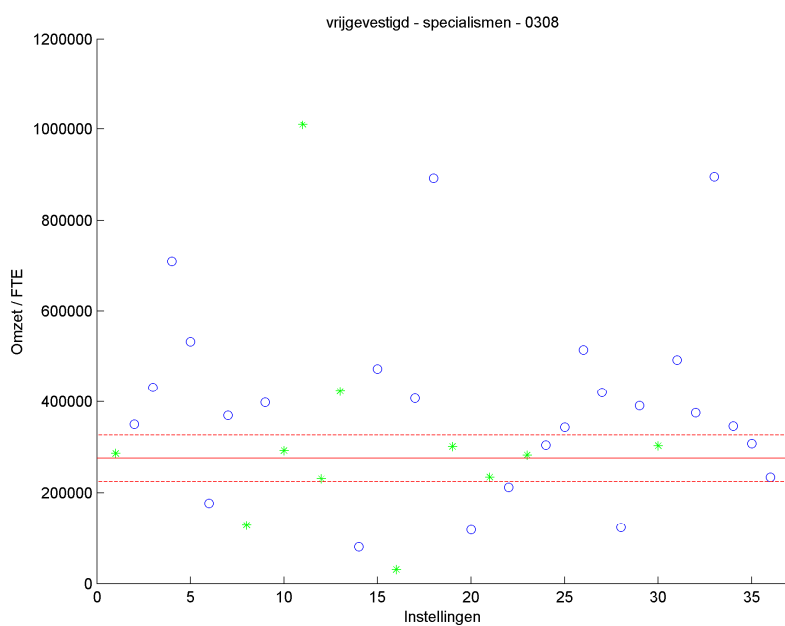
	< 220000	gemiddeld	> 320000
< 1 std	2	5	2
gemiddeld	2	33	5
> 1 std	0	6	2

Tabel 7: Uitbijters

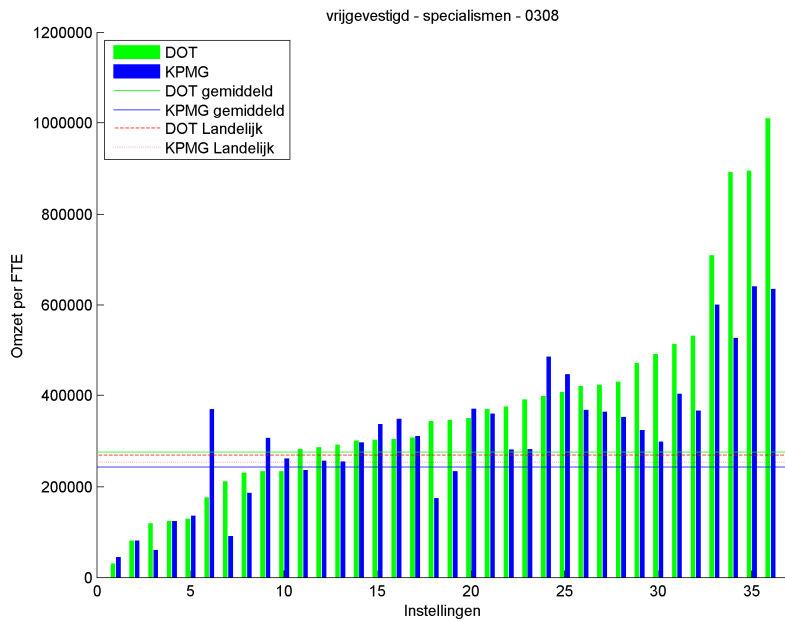
0308 - Neurochirurgie



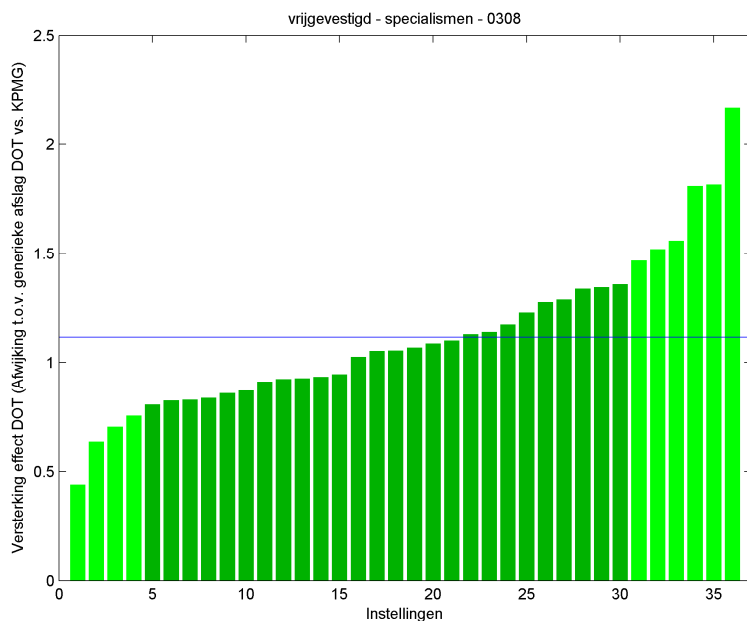
Figuur 36: Relatie honorariumomzet en FTE



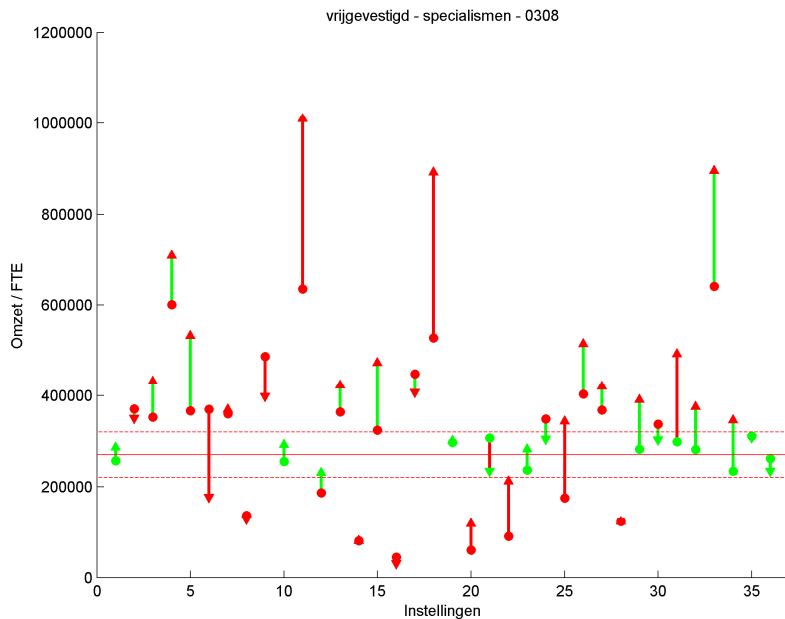
Figuur 37: Omzet per FTE ten opzichte van gemiddelde



Figuur 38: Omzet DBC 2011 (KPMG) en DOT 2012



Figuur 39: Omzetverschuiving van 2011 naar 2012



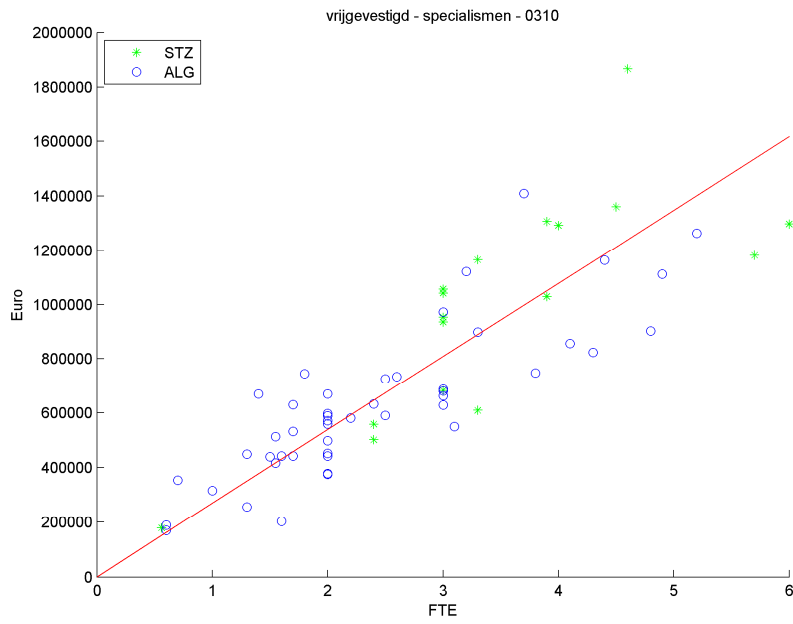
Figuur 40: Omzetverschuiving t.o.v. absolute waarde

Omzet per FTE

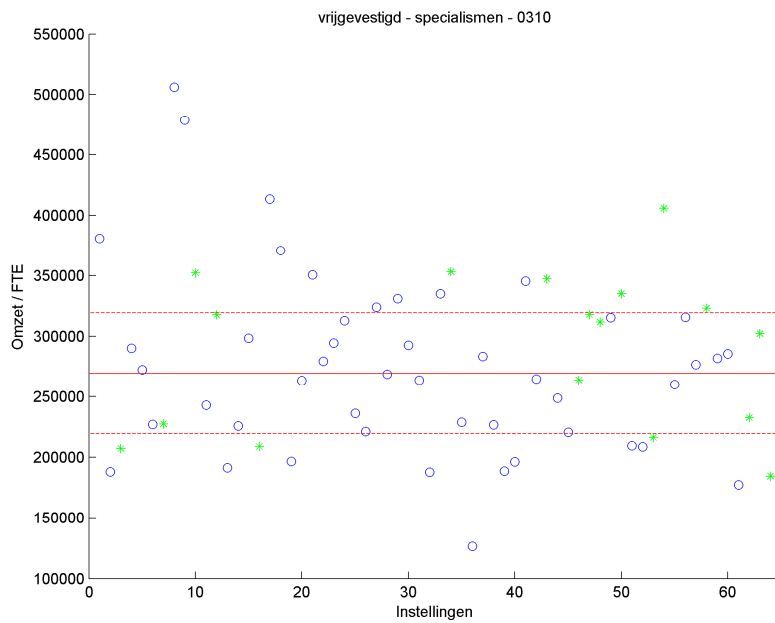
	< 220000	gemiddeld	> 320000
< 1 std	2	1	1
gemiddeld	3	9	14
> 1 std	2	0	4

Tabel 8: Uitbijters

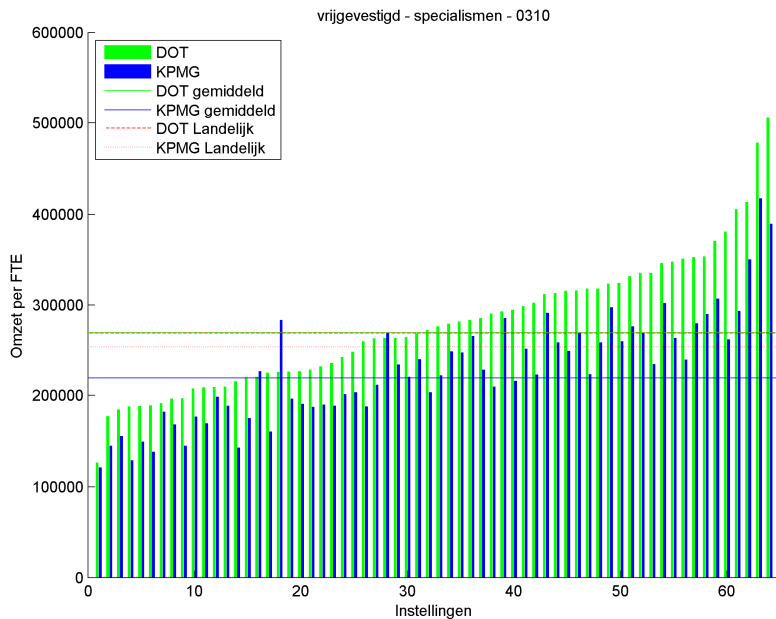
0310 - Dermatologie



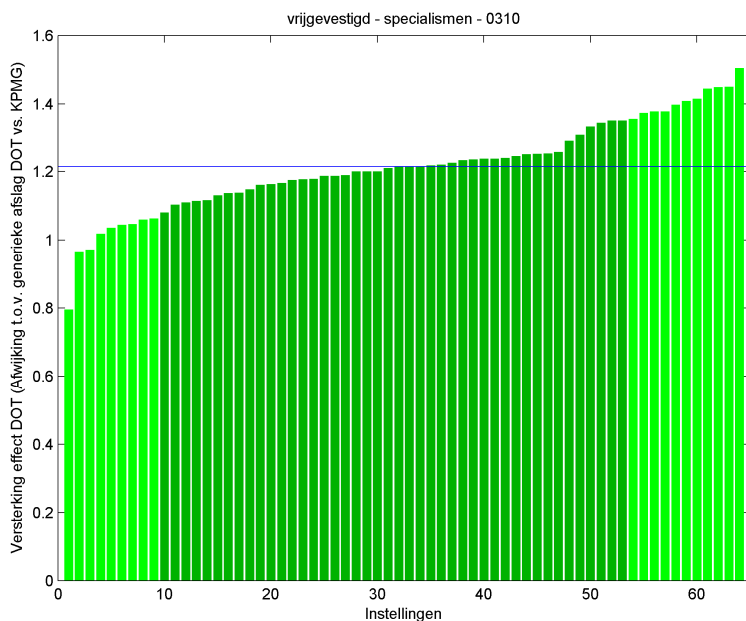
Figuur 41: Relatie honorariumomzet en FTE



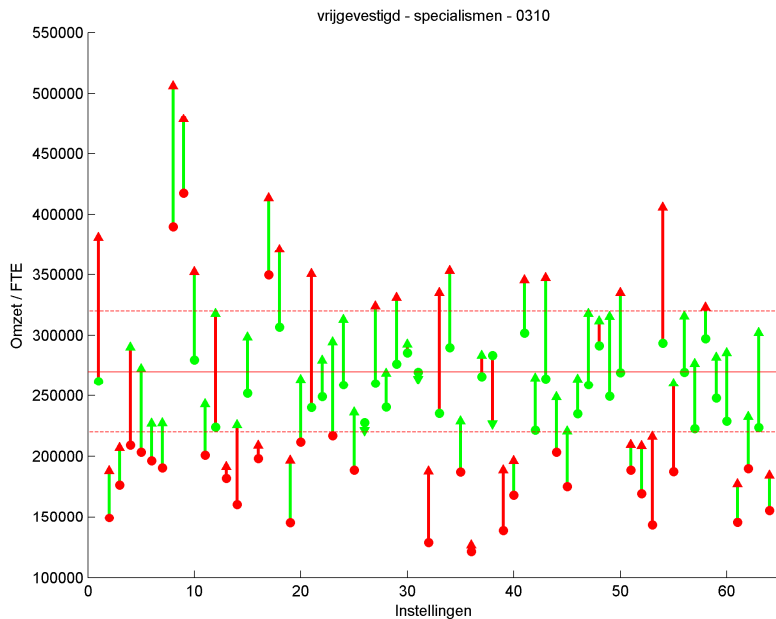
Figuur 42: Omzet per FTE ten opzichte van gemiddelde



Figuur 43: Omzet DBC 2011 (KPMG) en DOT 2012



Figuur 44: Omzetverschuiving van 2011 naar 2012



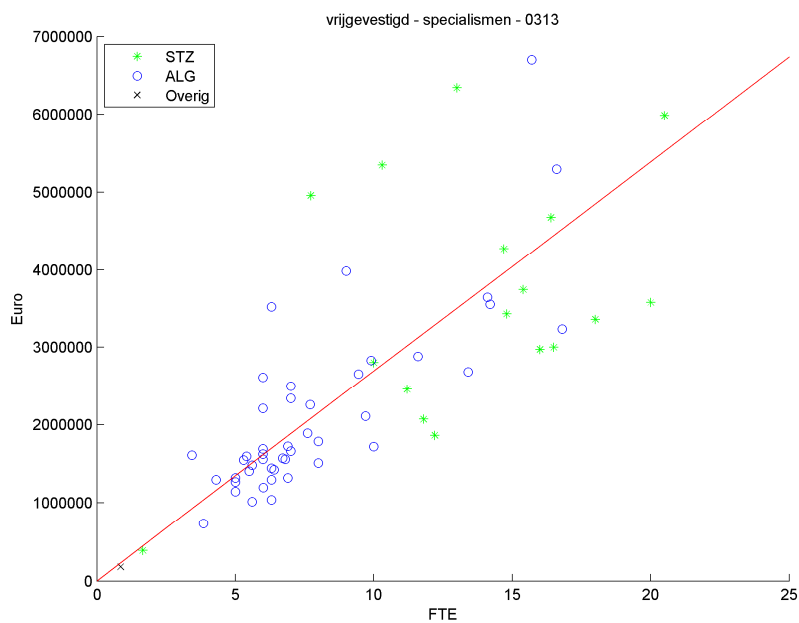
Figuur 45: Omzetverschuiving t.o.v. absolute waarde

Omzet per FTE

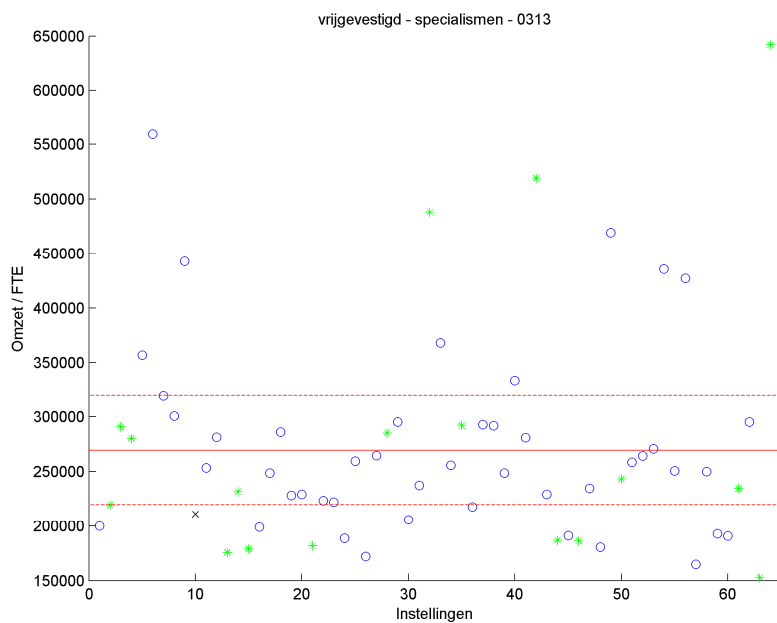
	< 220000	gemiddeld	> 320000
< 1 std	3	6	0
gemiddeld	8	24	12
> 1 std	3	4	4

Tabel 9: Uitbijters

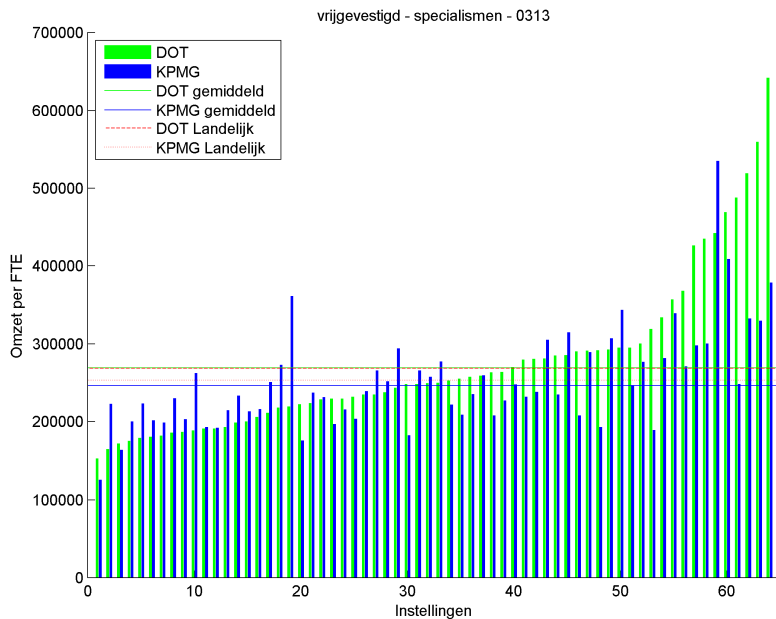
0313 - Inwendige geneeskunde



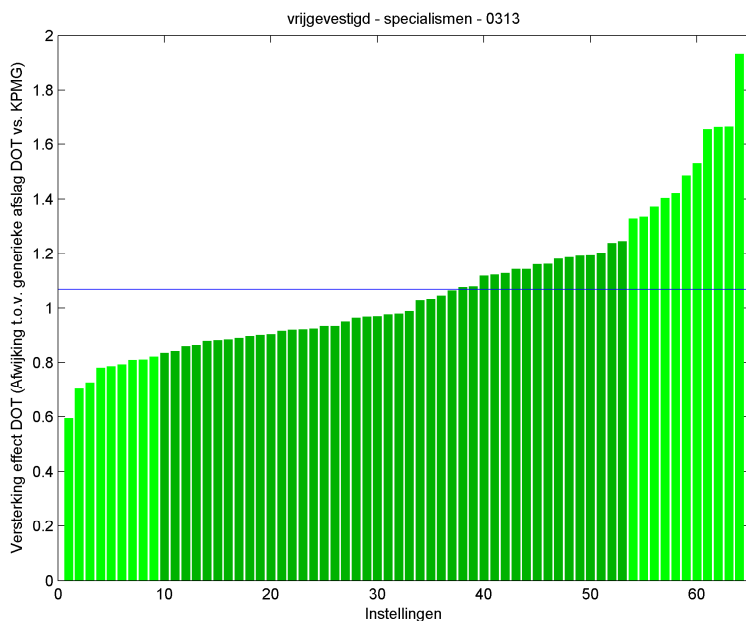
Figuur 46: Relatie honorariumomzet en FTE



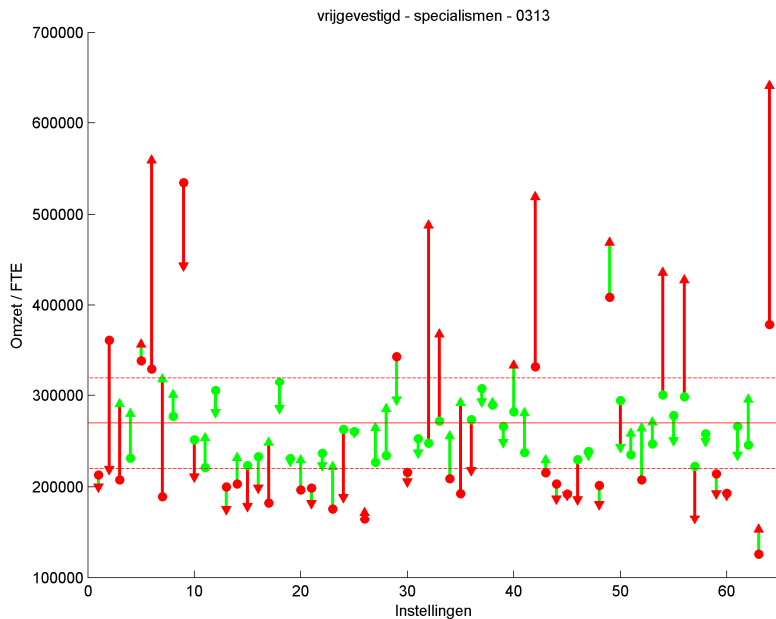
Figuur 47: Omzet per FTE ten opzichte van gemiddelde



Figuur 48: Omzet DBC 2011 (KPMG) en DOT 2012



Figuur 49: Omzetverschuiving van 2011 naar 2012



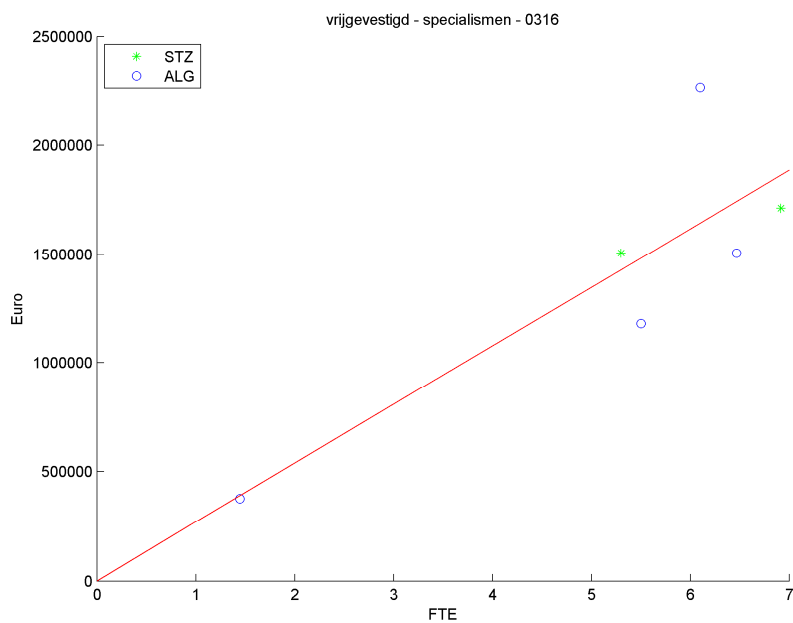
Figuur 50: Omzetverschuiving t.o.v. absolute waarde

Omzet per FTE

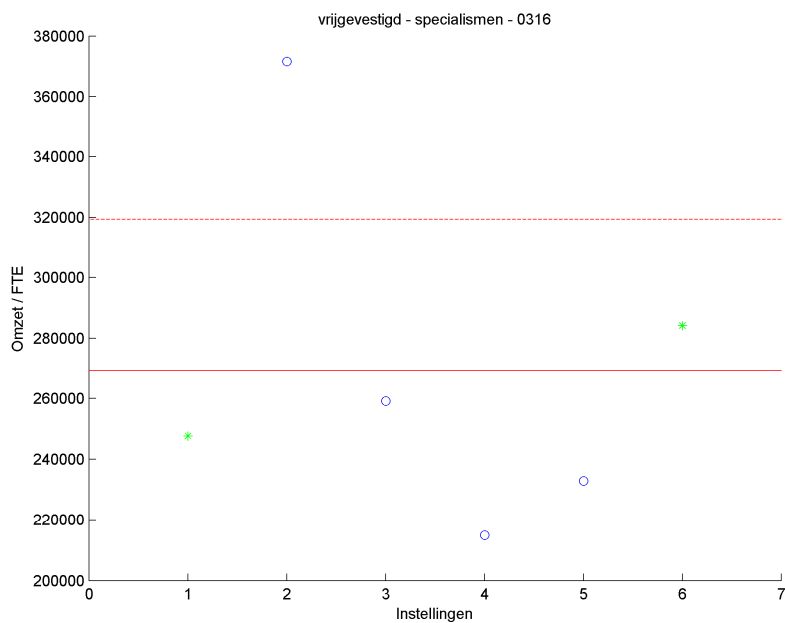
	< 220000	gemiddeld	> 320000
< 1 std	7	1	1
gemiddeld	12	29	3
> 1 std	0	4	7

Tabel 10: Uitbijters

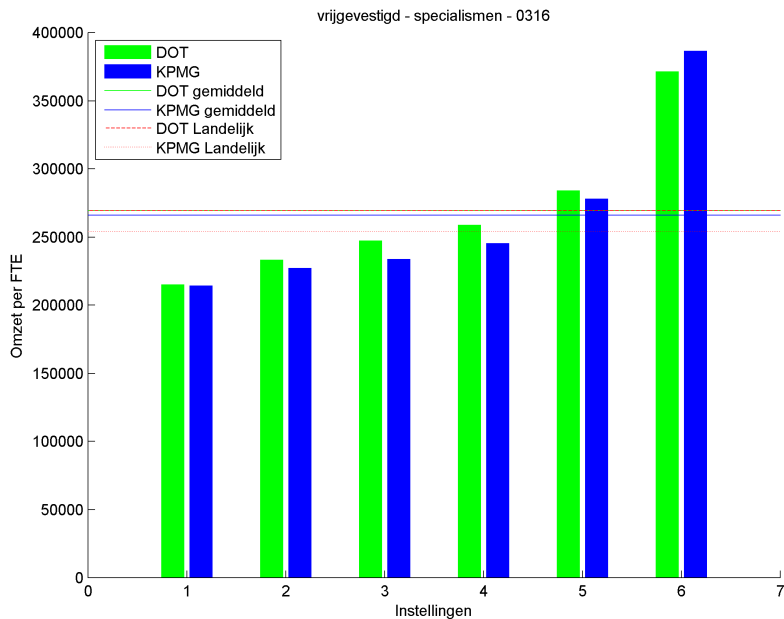
0316 - Kindergeneeskunde



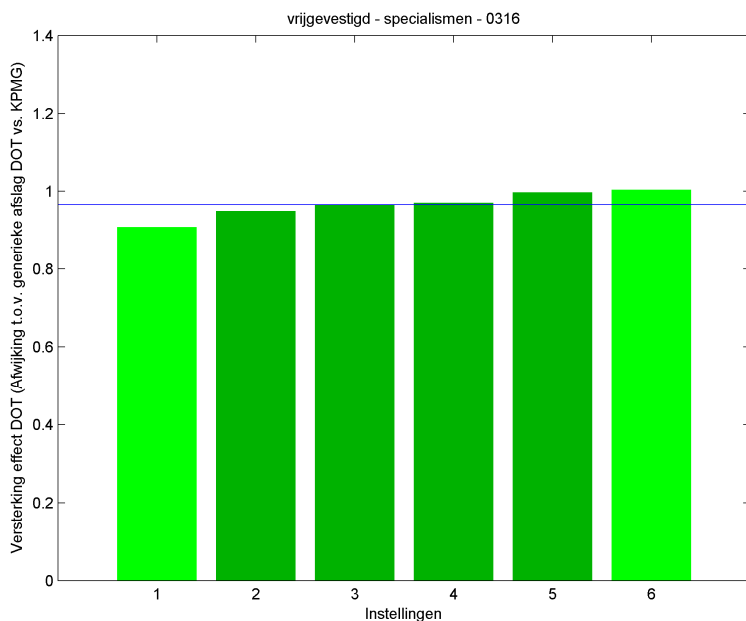
Figuur 51: Relatie honorariumomzet en FTE



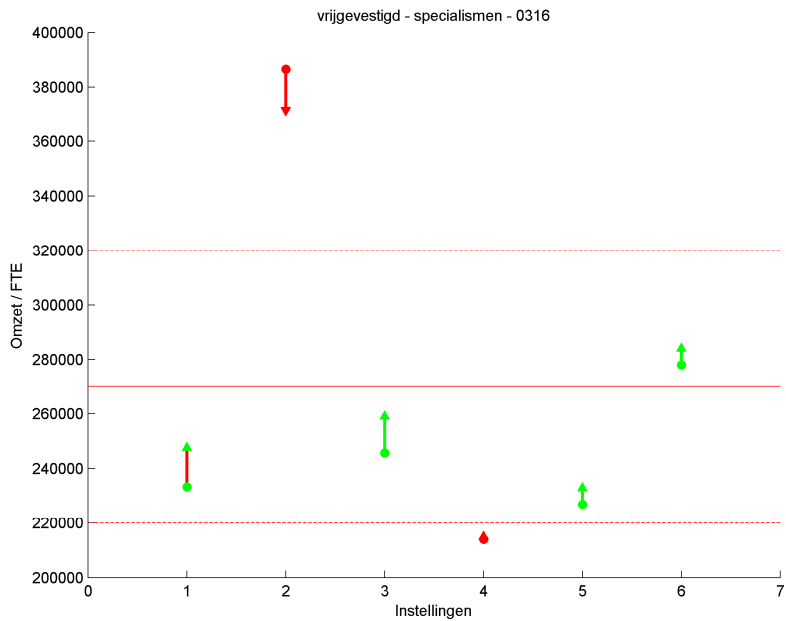
Figuur 52: Omzet per FTE ten opzichte van gemiddelde



Figuur 53: Omzet DBC 2011 (KPMG) en DOT 2012



Figuur 54: Omzetverschuiving van 2011 naar 2012



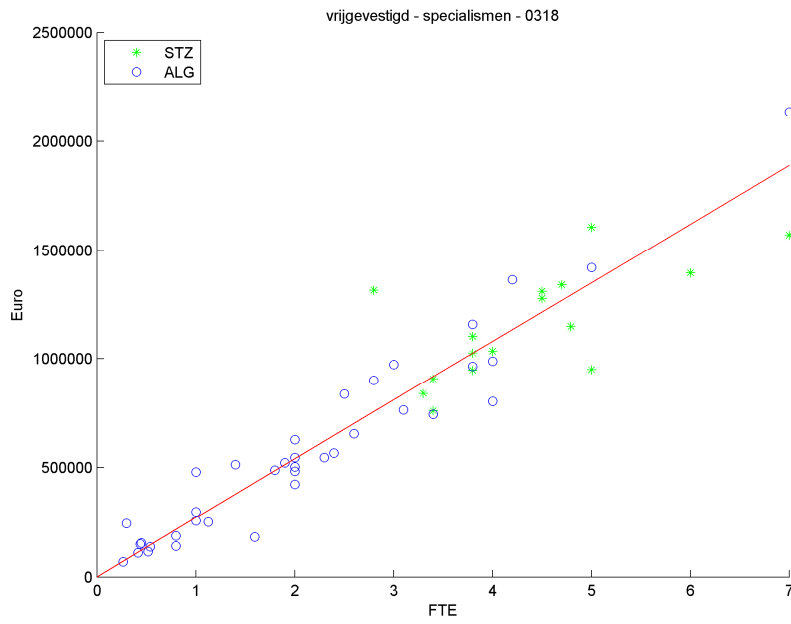
Figuur 55: Omzetverschuiving t.o.v. absolute waarde

Omzet per FTE

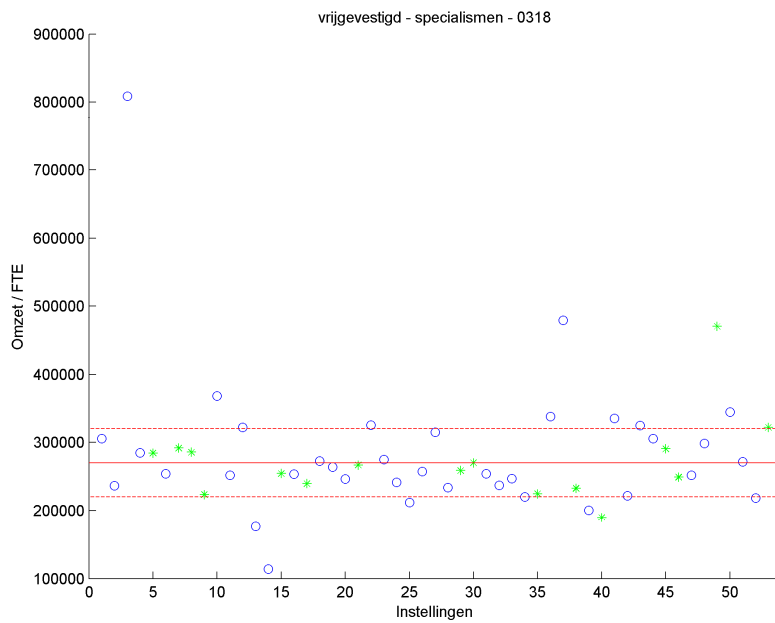
	< 220000	gemiddeld	> 320000
< 1 std	0	0	1
gemiddeld	1	3	0
> 1 std	0	1	0

Tabel 11: Uitbijters

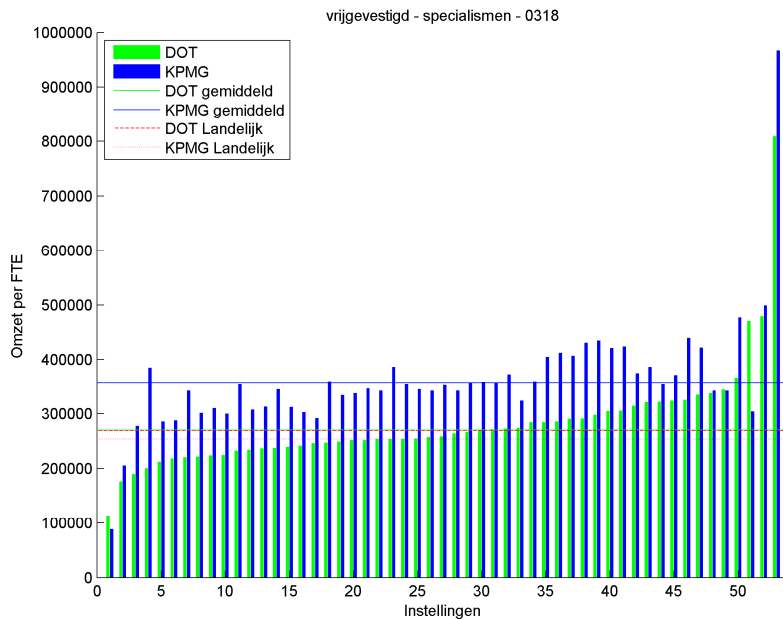
0318 - Maag-darm-leverziekten



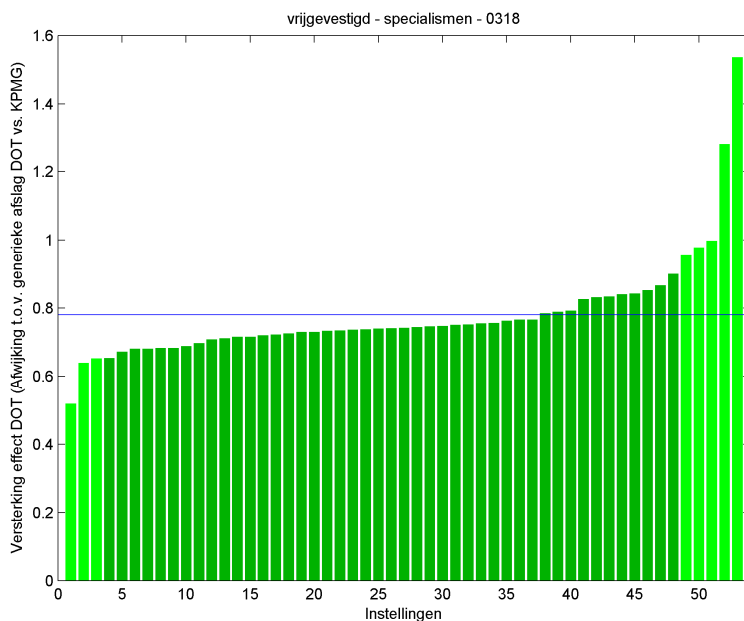
Figuur 56: Relatie honorariumomzet en FTE



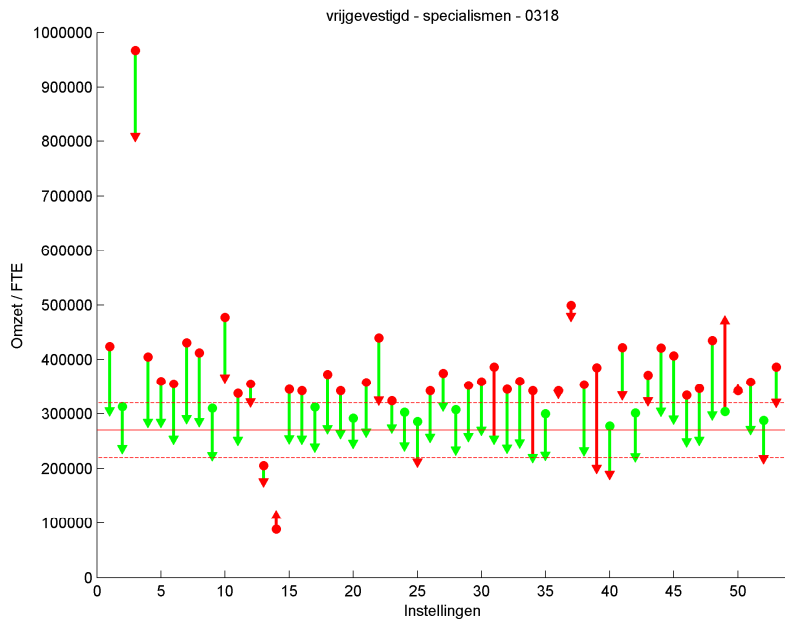
Figuur 57: Omzet per FTE ten opzichte van gemiddelde



Figuur 58: Omzet DBC 2011 (KPMG) en DOT 2012



Figuur 59: Omzetverschuiving van 2011 naar 2012



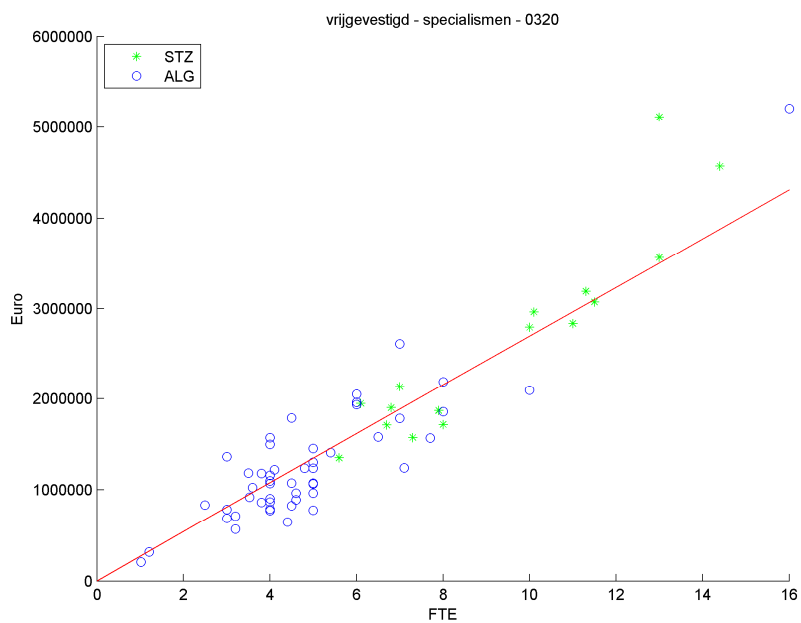
Figuur 60: Omzetverschuiving t.o.v. absolute waarde

Omzet per FTE

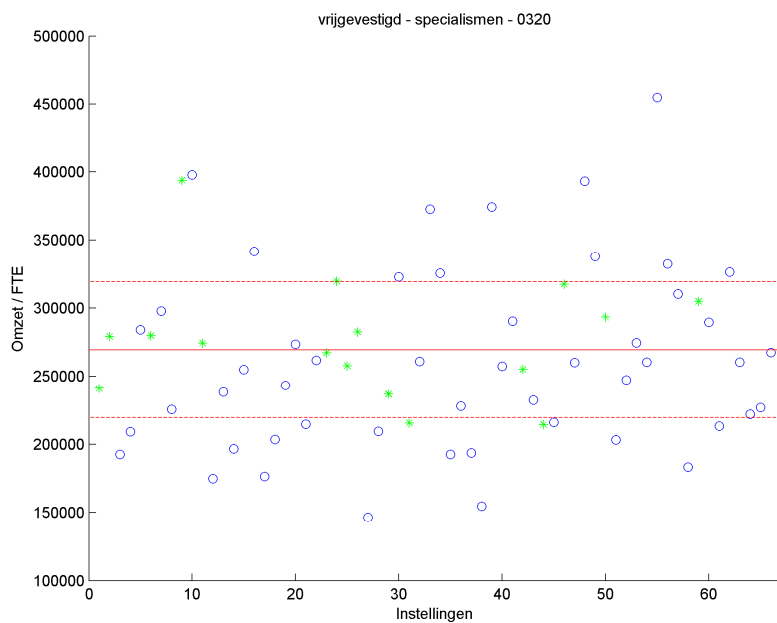
	< 220000	gemiddeld	> 320000
< 1 std	1	2	0
gemiddeld	4	34	7
> 1 std	1	0	4

Tabel 12: Uitbijters

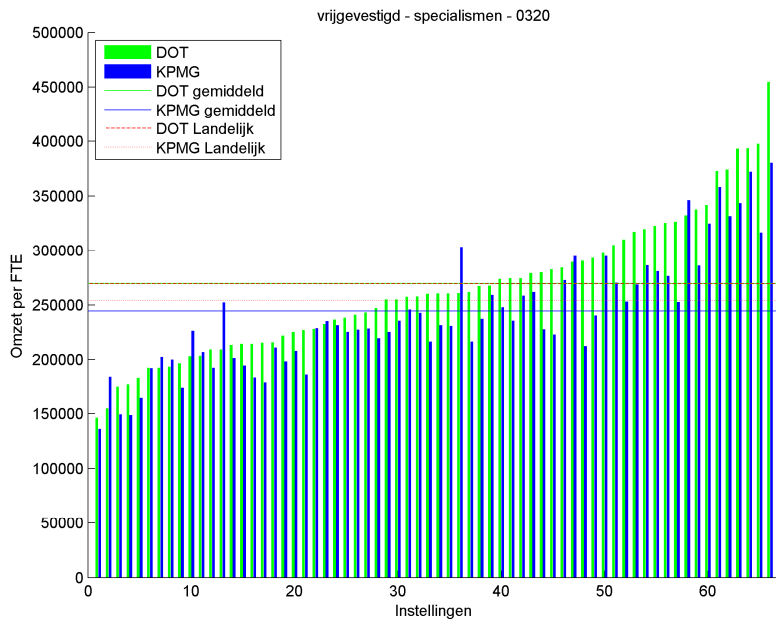
0320 - Cardiologie



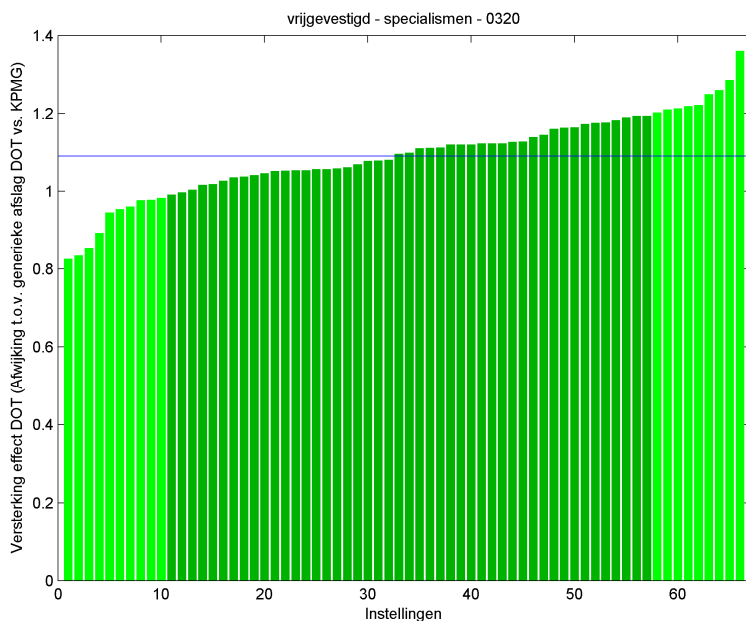
Figuur 61: Relatie honorariumomzet en FTE



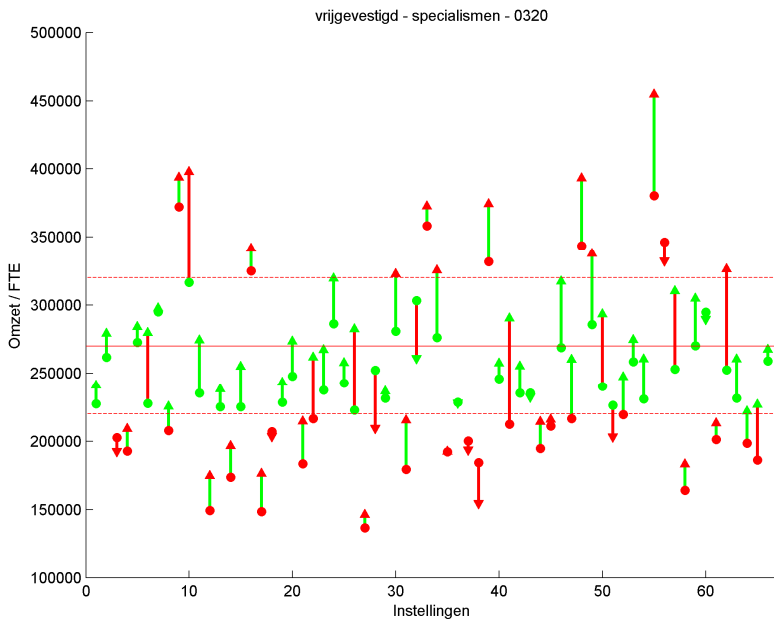
Figuur 62: Omzet per FTE ten opzichte van gemiddelde



Figuur 63: Omzet DBC 2011 (KPMG) en DOT 2012



Figuur 64: Omzetverschuiving van 2011 naar 2012



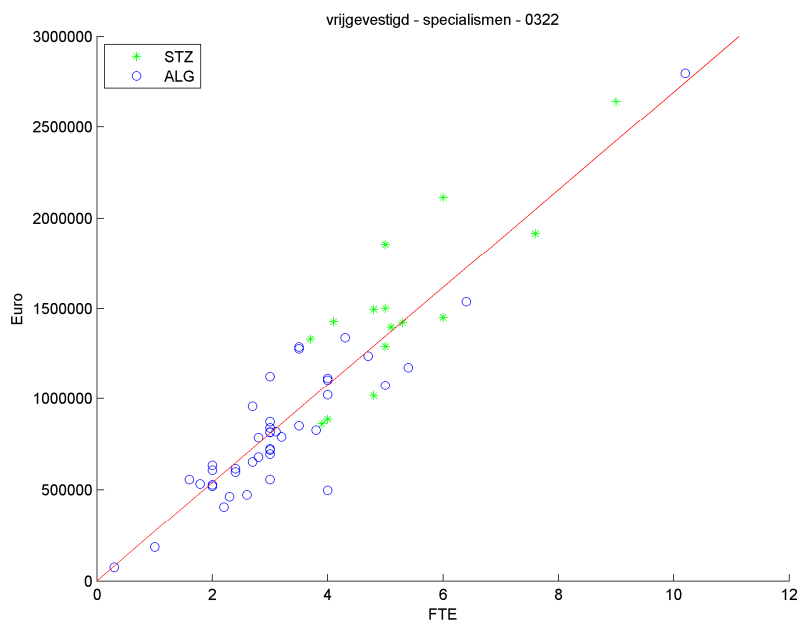
Figuur 65: Omzetverschuiving t.o.v. absolute waarde

Omzet per FTE

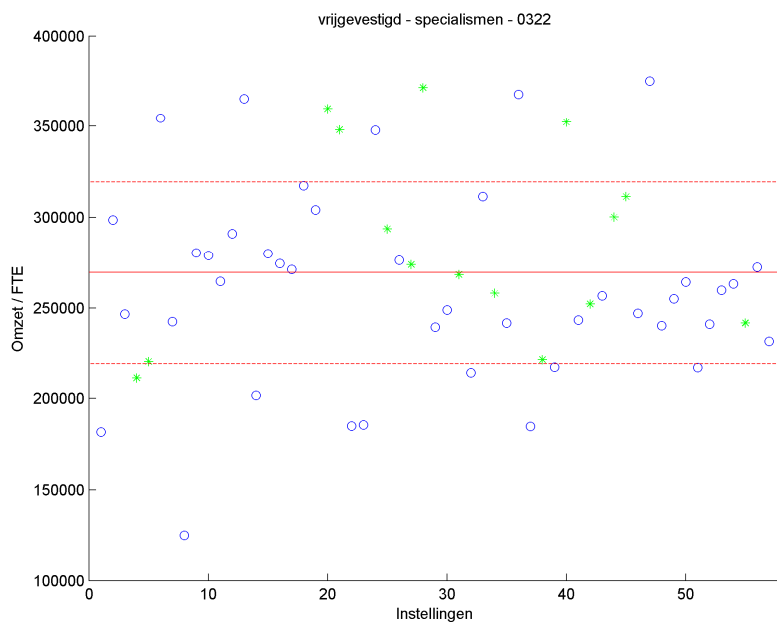
	< 220000	gemiddeld	> 320000
< 1 std	6	3	1
gemiddeld	12	26	9
> 1 std	0	7	2

Tabel 13: Uitbijters

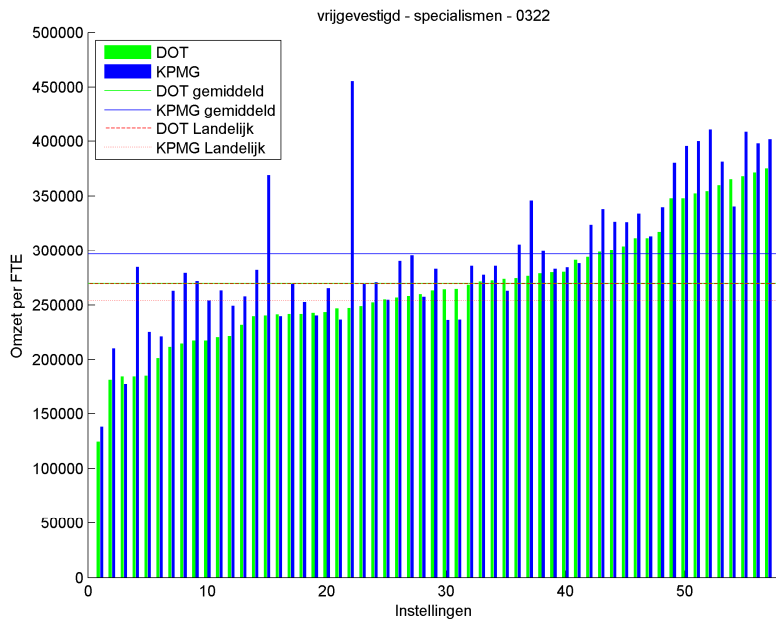
0322 - Longziekten



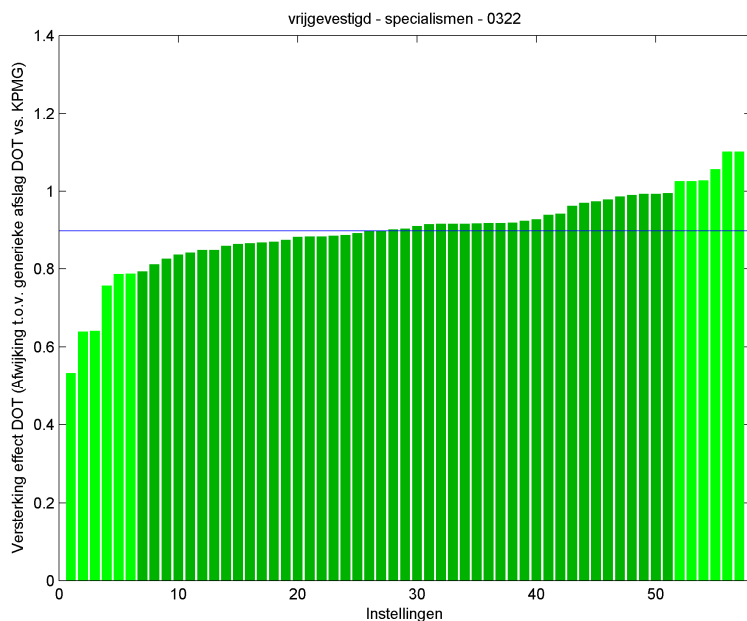
Figuur 66: Relatie honorariumomzet en FTE



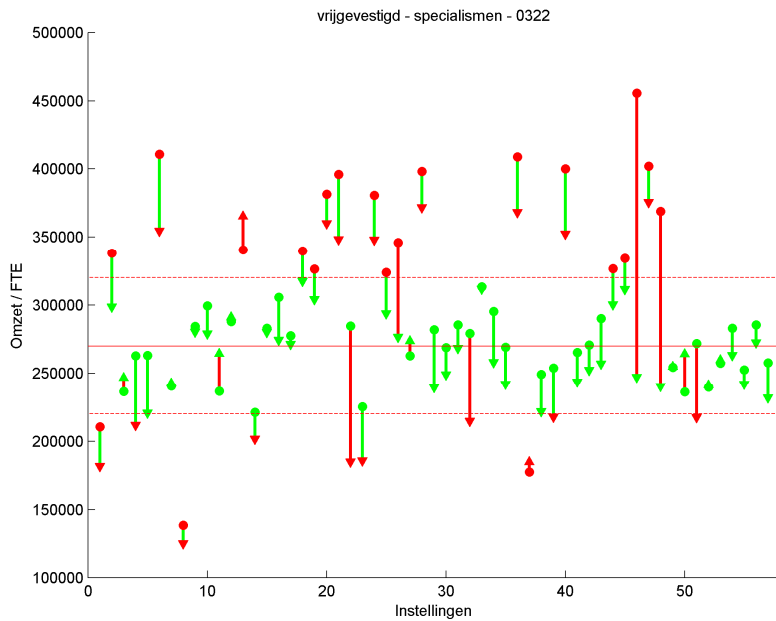
Figuur 67: Omzet per FTE ten opzichte van gemiddelde



Figuur 68: Omzet DBC 2011 (KPMG) en DOT 2012



Figuur 69: Omzetverschuiving van 2011 naar 2012



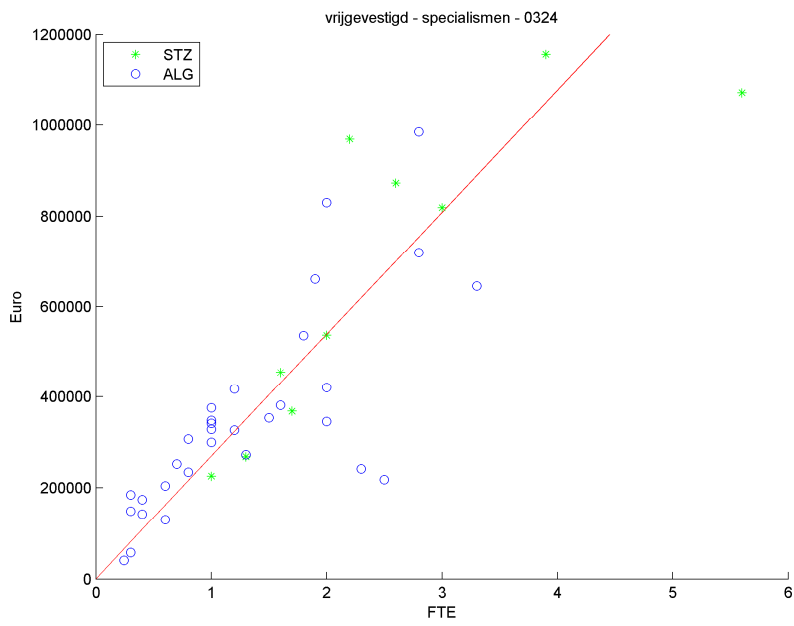
Figuur 70: Omzetverschuiving t.o.v. absolute waarde

Omzet per FTE

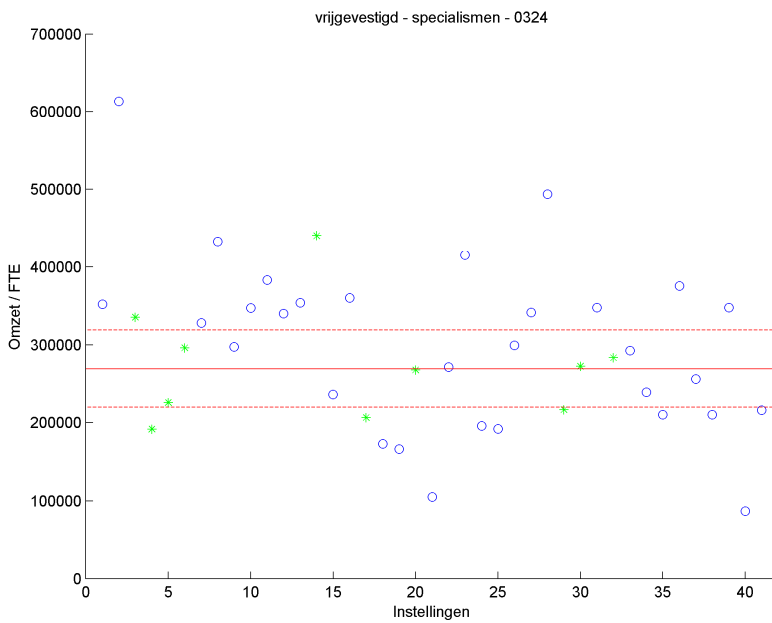
	< 220000	gemiddeld	> 320000
< 1 std	3	3	0
gemiddeld	6	31	8
> 1 std	1	4	1

Tabel 14: Uitbijters

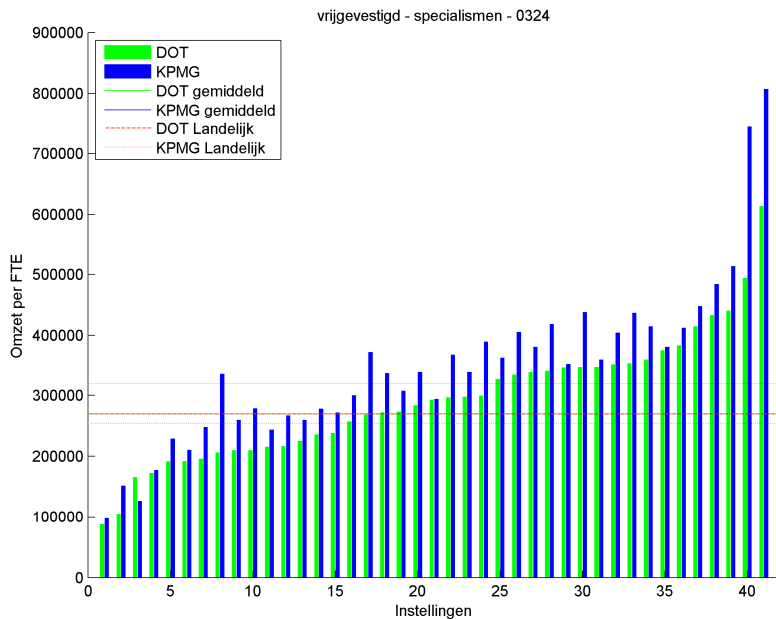
0324 - Reumatologie



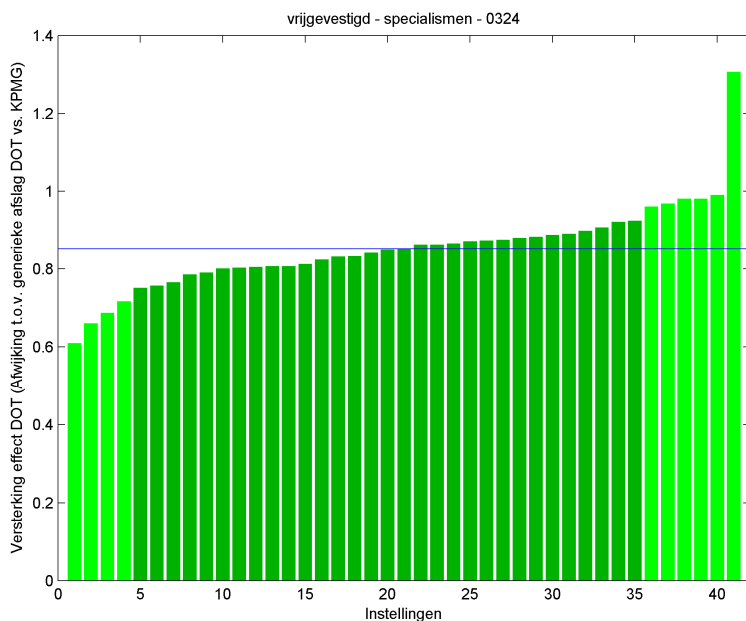
Figuur 71: Relatie honorariumomzet en FTE



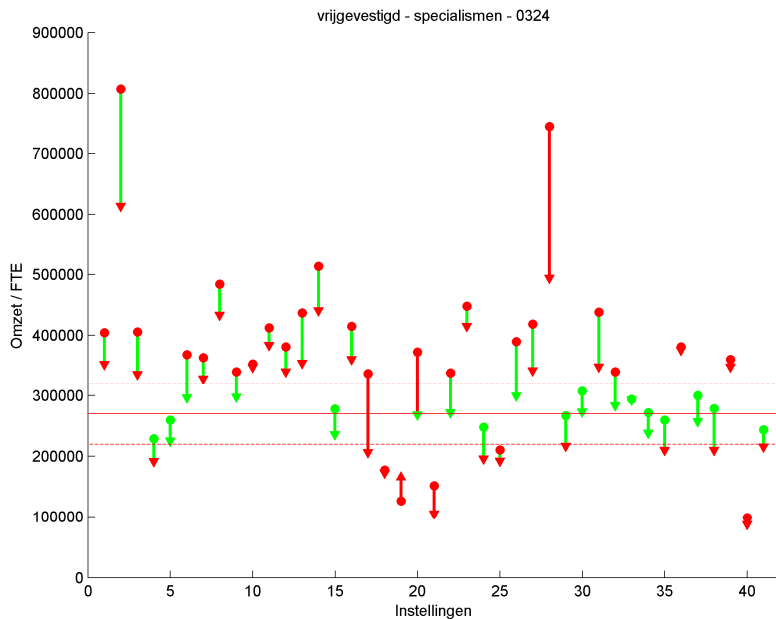
Figuur 72: Omzet per FTE ten opzichte van gemiddelde



Figuur 73: Omzet DBC 2011 (KPMG) en DOT 2012



Figuur 74: Omzetverschuiving van 2011 naar 2012



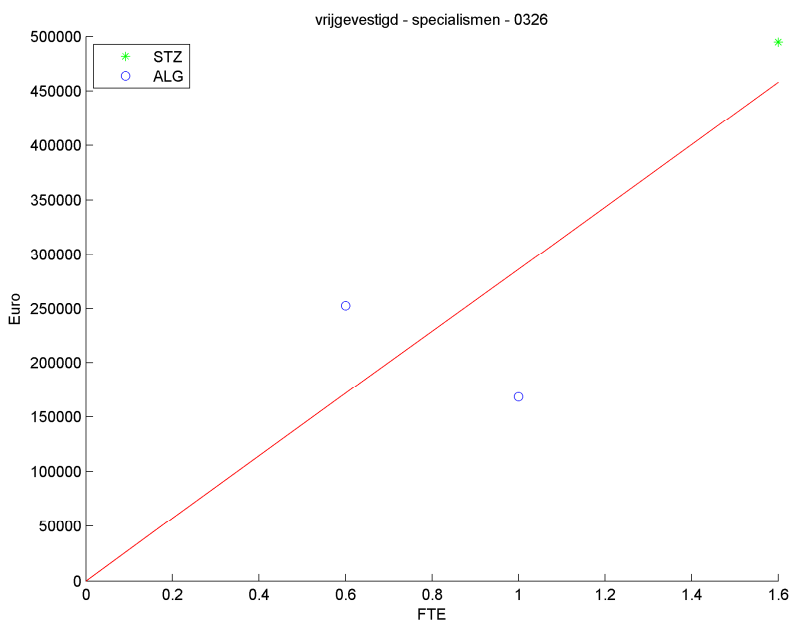
Figuur 75: Omzetverschuiving t.o.v. absolute waarde

Omzet per FTE

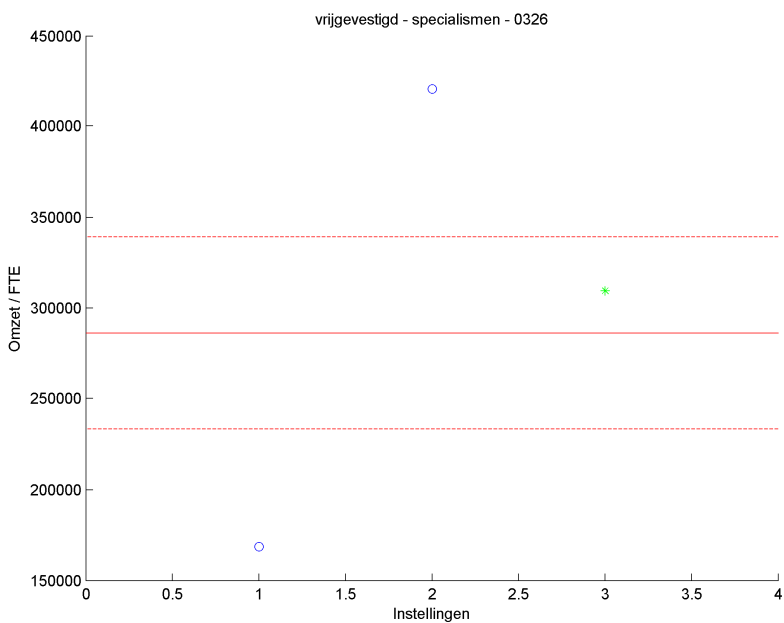
	< 220000	gemiddeld	> 320000
< 1 std	2	1	1
gemiddeld	8	10	13
> 1 std	2	1	3

Tabel 15: Uitbijters

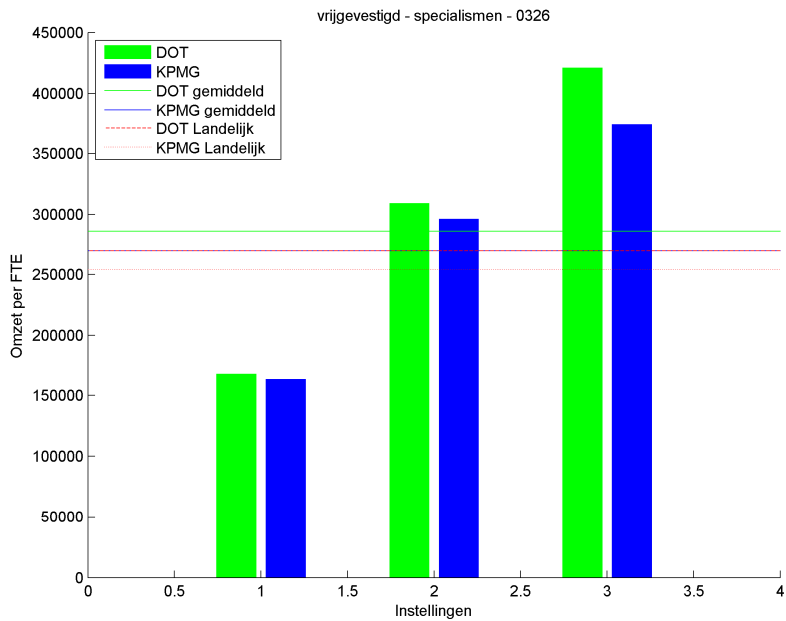
0326 - Allergologie



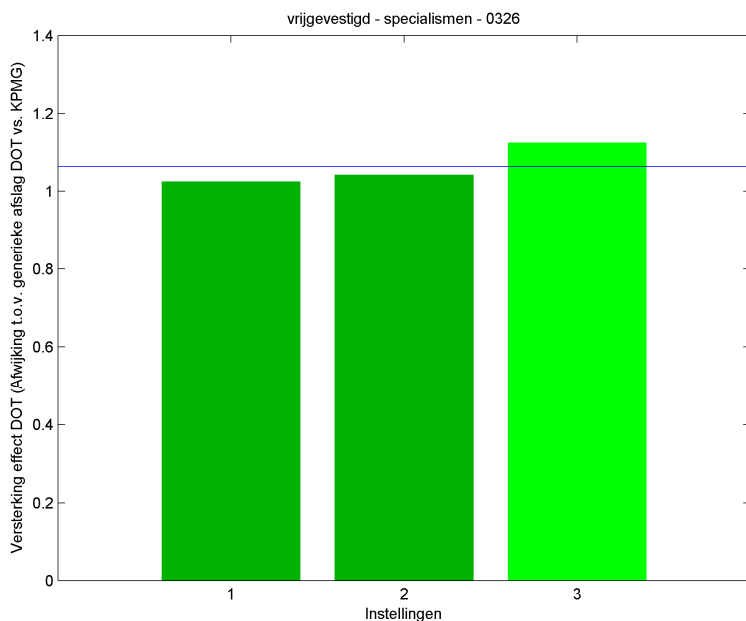
Figuur 76: Relatie honorariumomzet en FTE



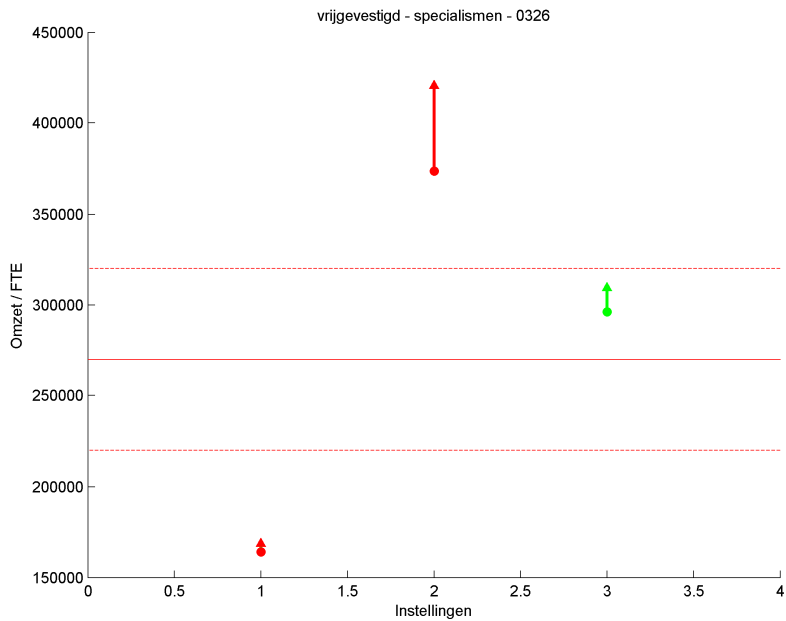
Figuur 77: Omzet per FTE ten opzichte van gemiddelde



Figuur 78: Omzet DBC 2011 (KPMG) en DOT 2012



Figuur 79: Omzetverschuiving van 2011 naar 2012



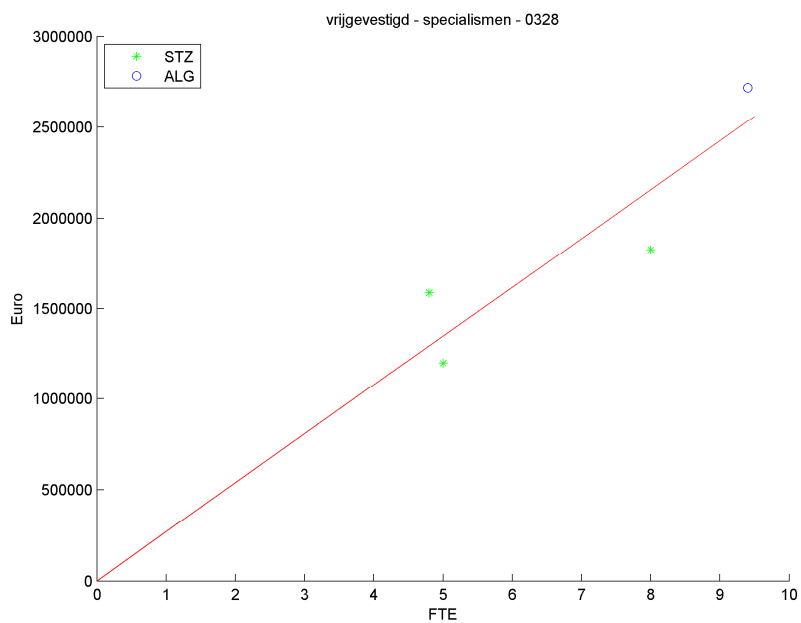
Figuur 80: Omzetverschuiving t.o.v. absolute waarde

Omzet per FTE

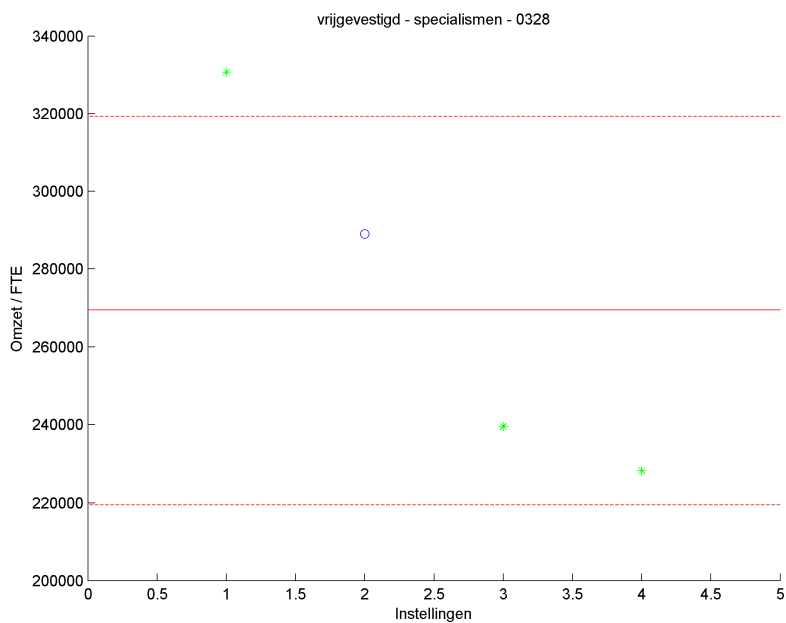
	< 220000	gemiddeld	> 320000
< 1 std	0	0	0
gemiddeld	1	1	0
> 1 std	0	0	1

Tabel 16: Uitbijters

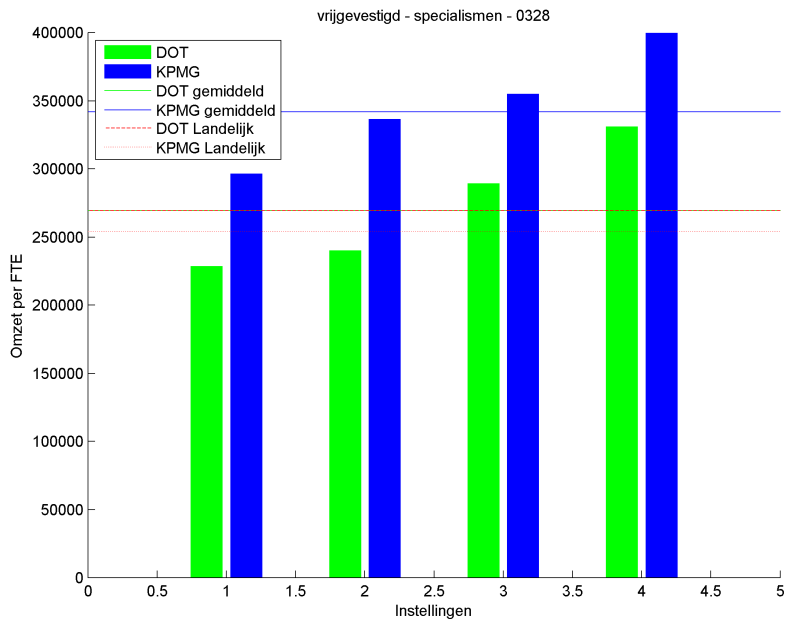
0328 - Thoraxchirurgie



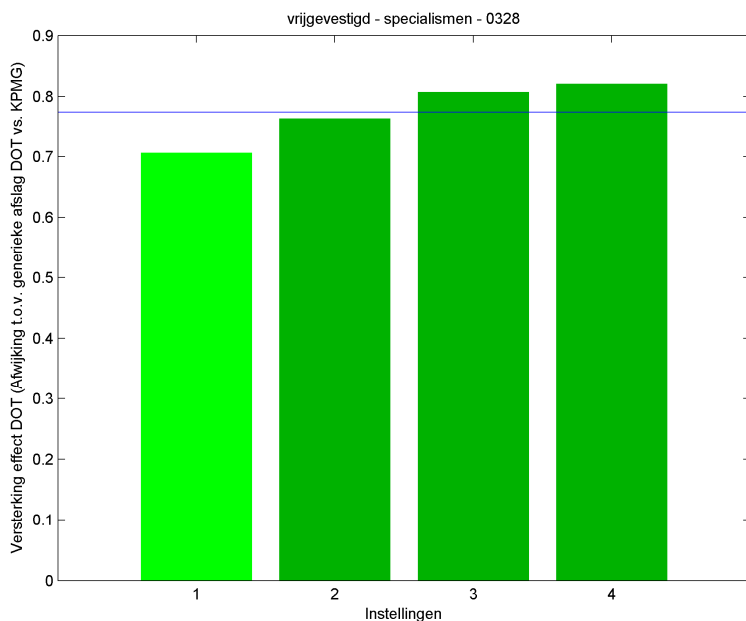
Figuur 81: Relatie honorariumomzet en FTE



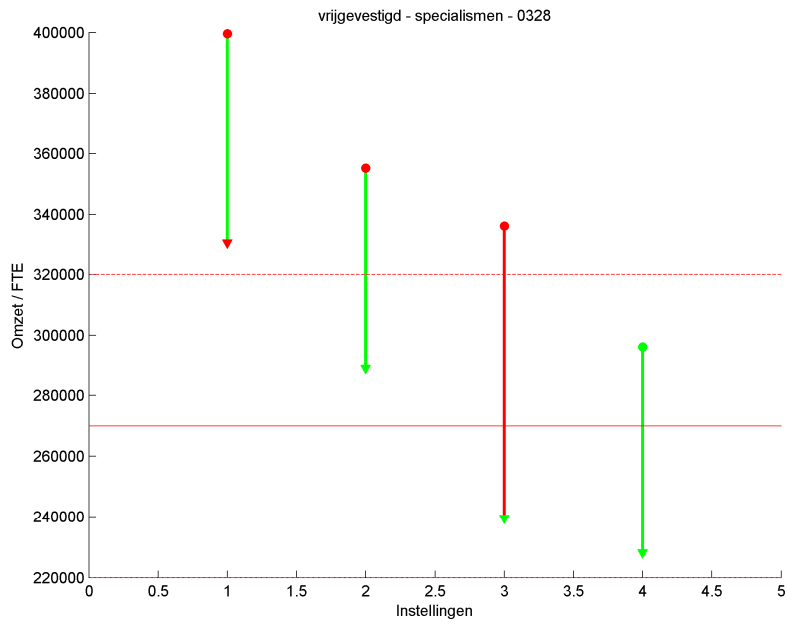
Figuur 82: Omzet per FTE ten opzichte van gemiddelde



Figuur 83: Omzet DBC 2011 (KPMG) en DOT 2012



Figuur 84: Omzetverschuiving van 2011 naar 2012



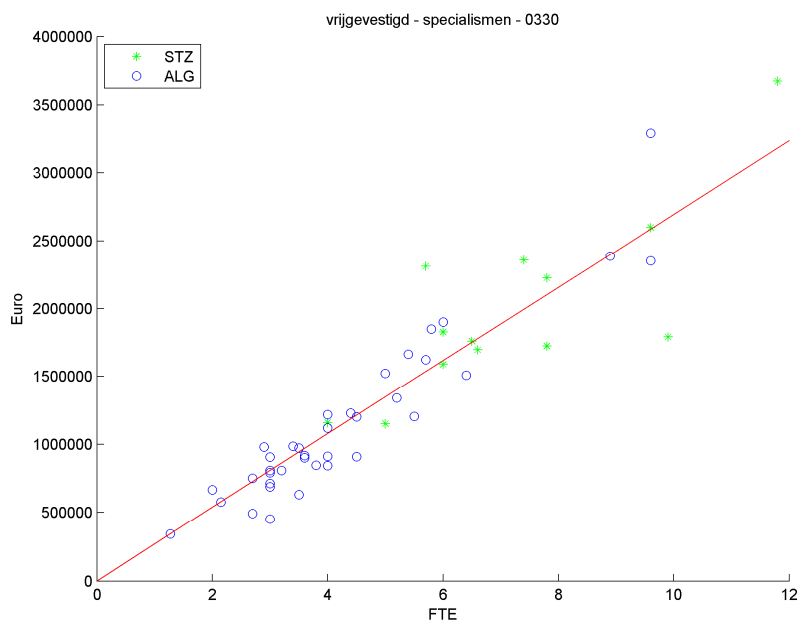
Figuur 85: Omzetverschuiving t.o.v. absolute waarde

Omzet per FTE

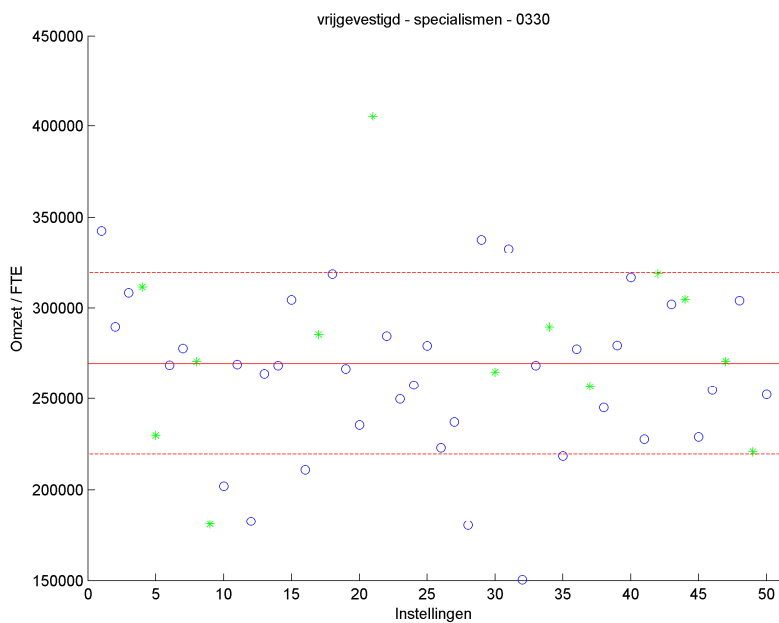
	< 220000	gemiddeld	> 320000
< 1 std	0	1	0
gemiddeld	0	2	1
> 1 std	0	0	0

Tabel 17: Uitbijters

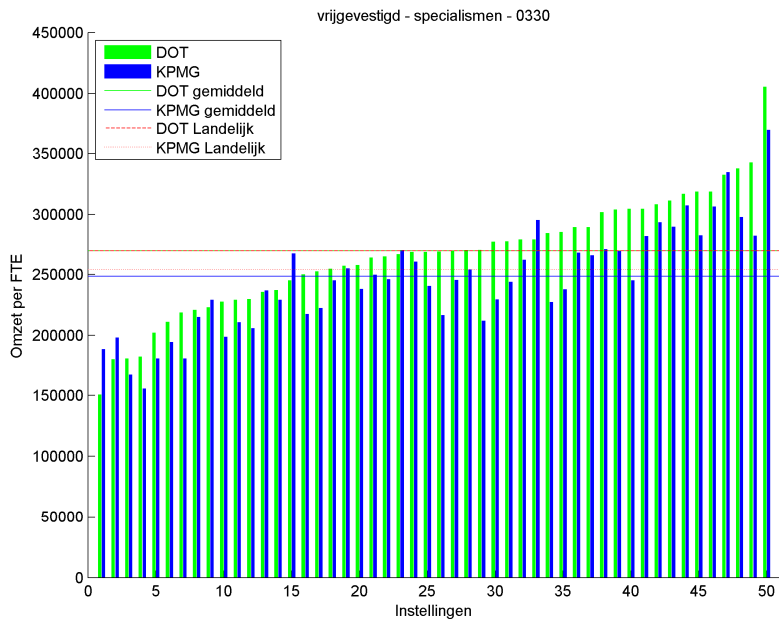
0330 - Neurologie



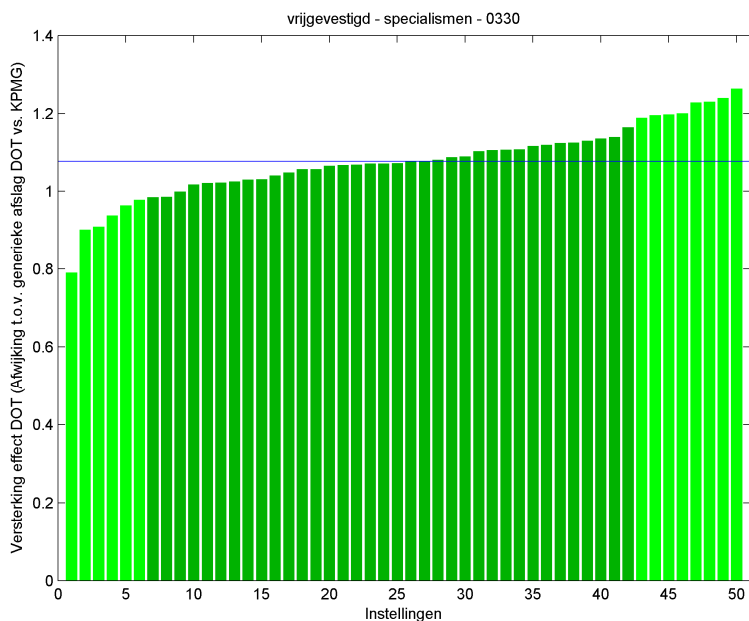
Figuur 86: Relatie honorariumomzet en FTE



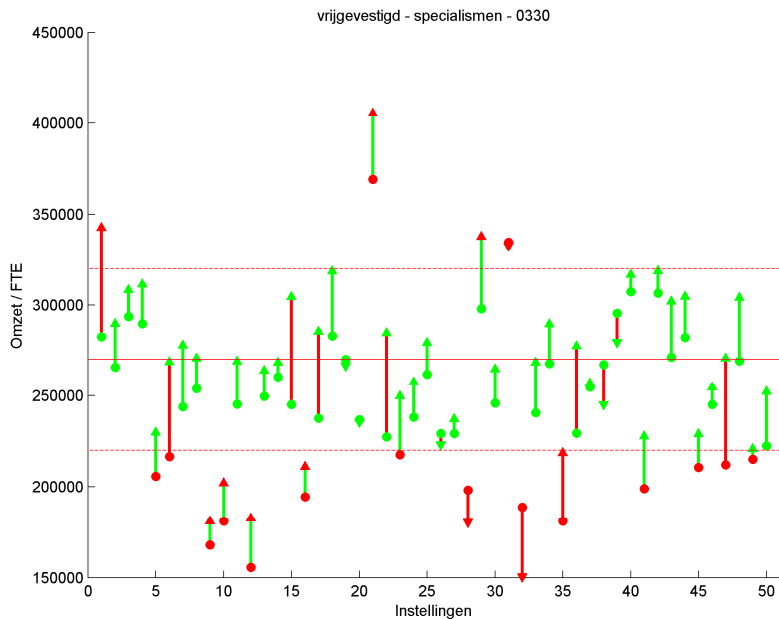
Figuur 87: Omzet per FTE ten opzichte van gemiddelde



Figuur 88: Omzet DBC 2011 (KPMG) en DOT 2012



Figuur 89: Omzetverschuiving van 2011 naar 2012



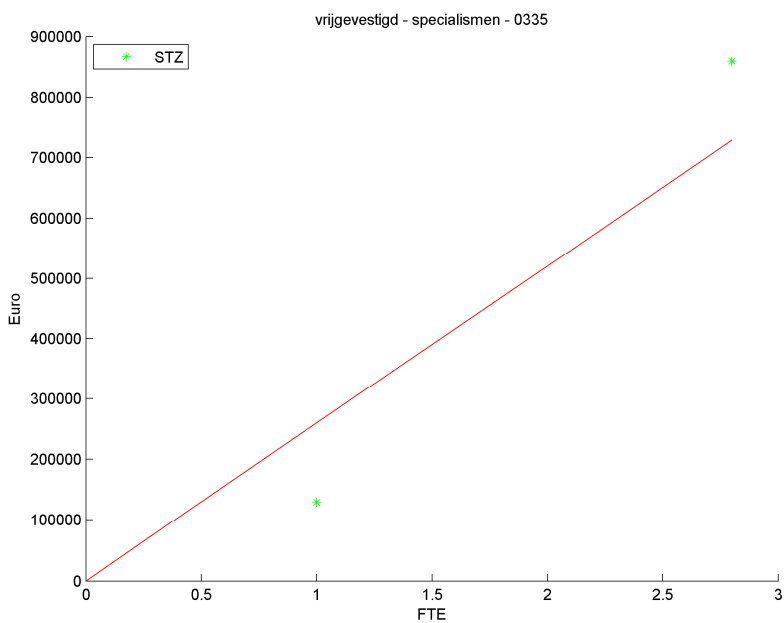
Figuur 90: Omzetverschuiving t.o.v. absolute waarde

Omzet per FTE

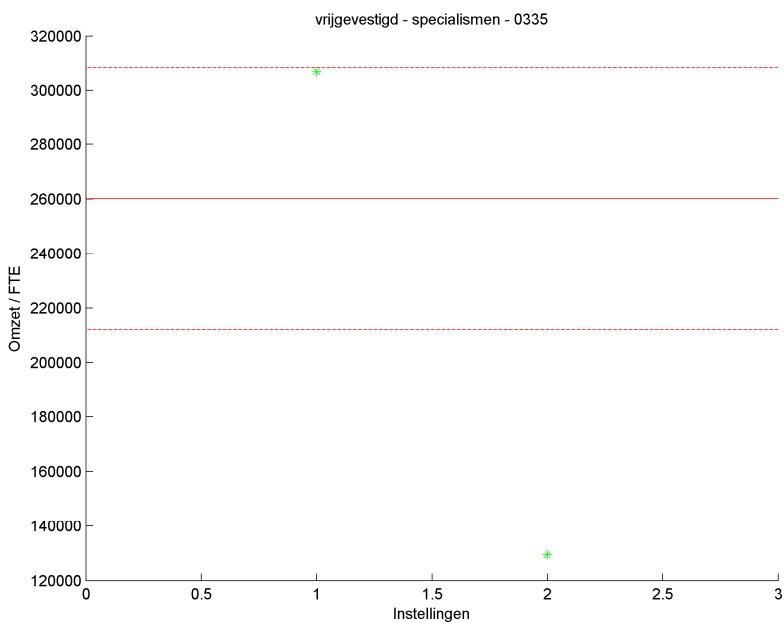
	< 220000	gemiddeld	> 320000
< 1 std	2	4	0
gemiddeld	4	29	3
> 1 std	1	6	1

Tabel 18: Uitbijters

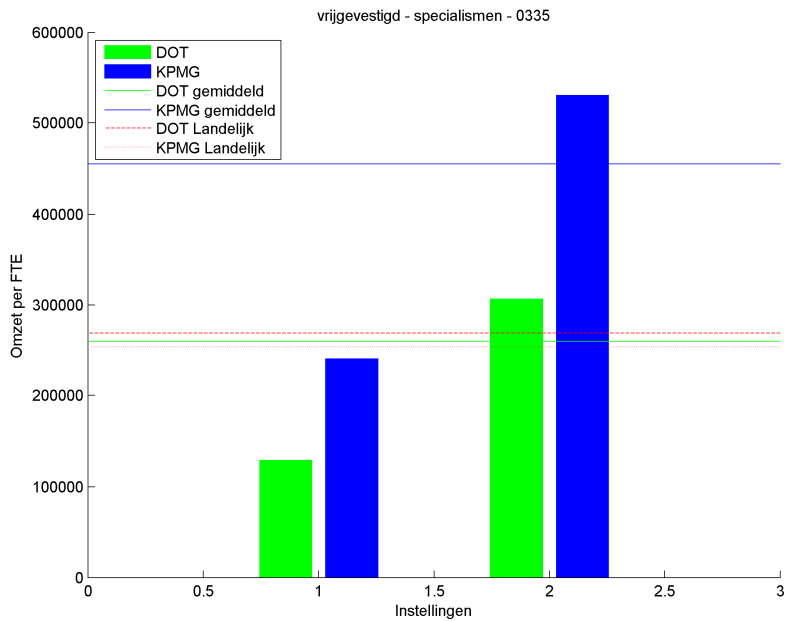
0335 - Klinische geriatrie



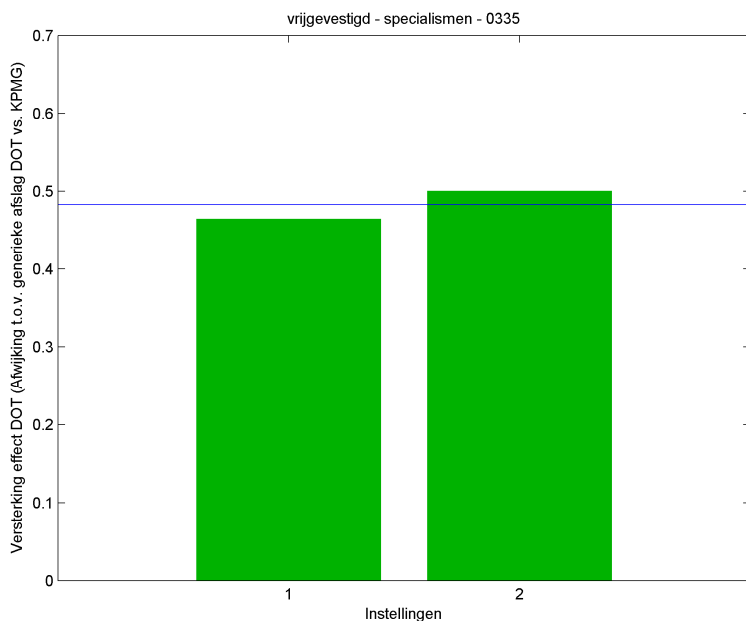
Figuur 91: Relatie honorariumomzet en FTE



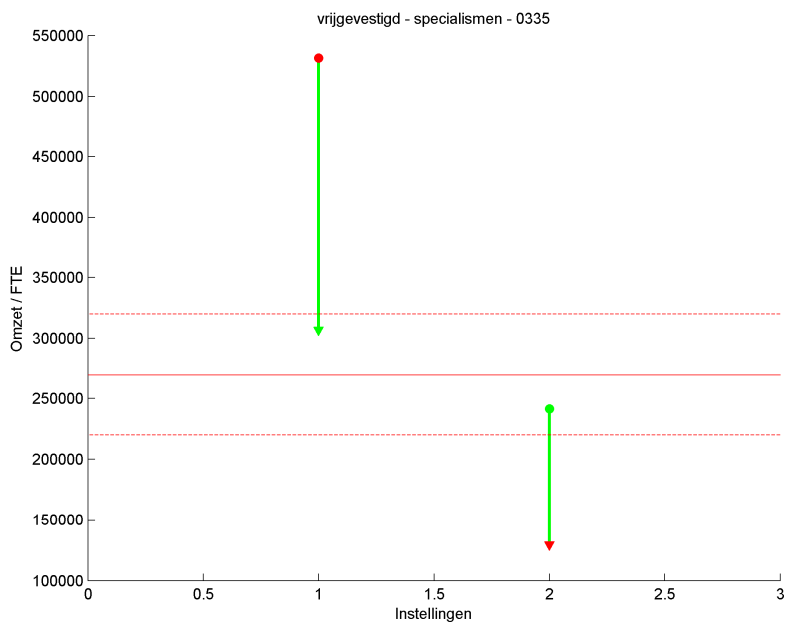
Figuur 92: Omzet per FTE ten opzichte van gemiddelde



Figuur 93: Omzet DBC 2011 (KPMG) en DOT 2012



Figuur 94: Omzetverschuiving van 2011 naar 2012



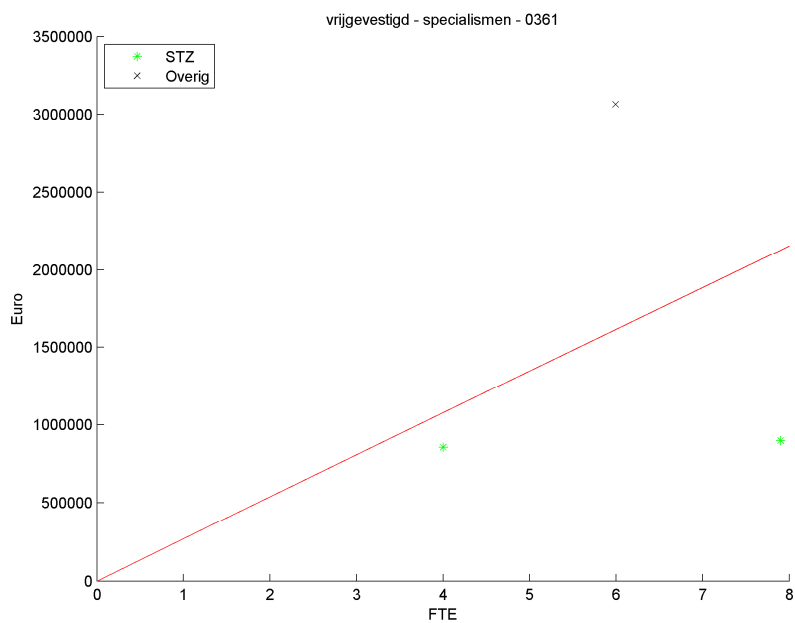
Figuur 95: Omzetverschuiving t.o.v. absolute waarde

Omzet per FTE

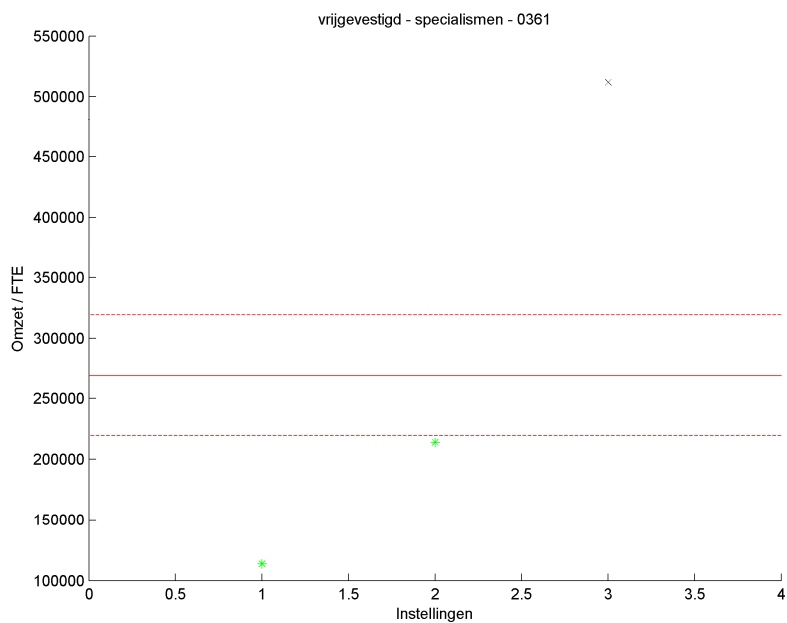
	< 220000	gemiddeld	> 320000
< 1 std	0	0	0
gemiddeld	1	1	0
> 1 std	0	0	0

Tabel 19: Uitbijters

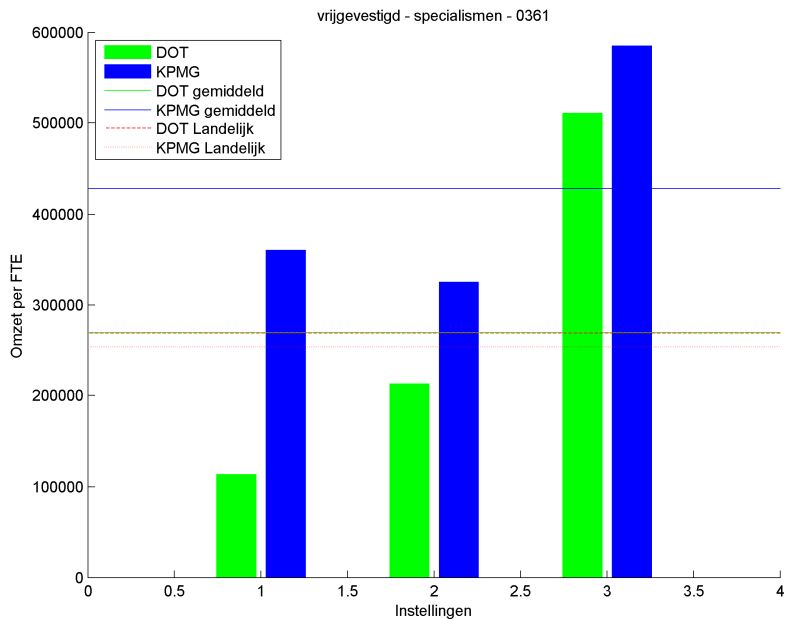
0361 - Radiotherapie



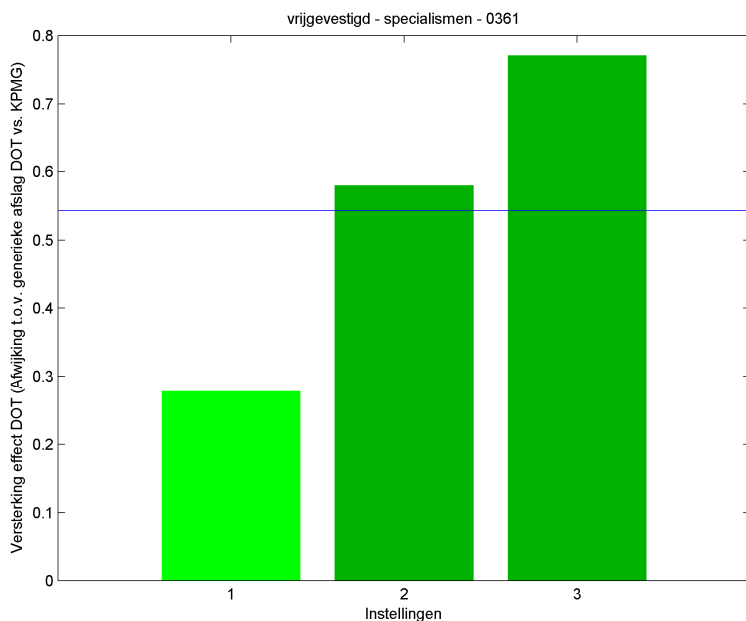
Figuur 96: Relatie honorariumomzet en FTE



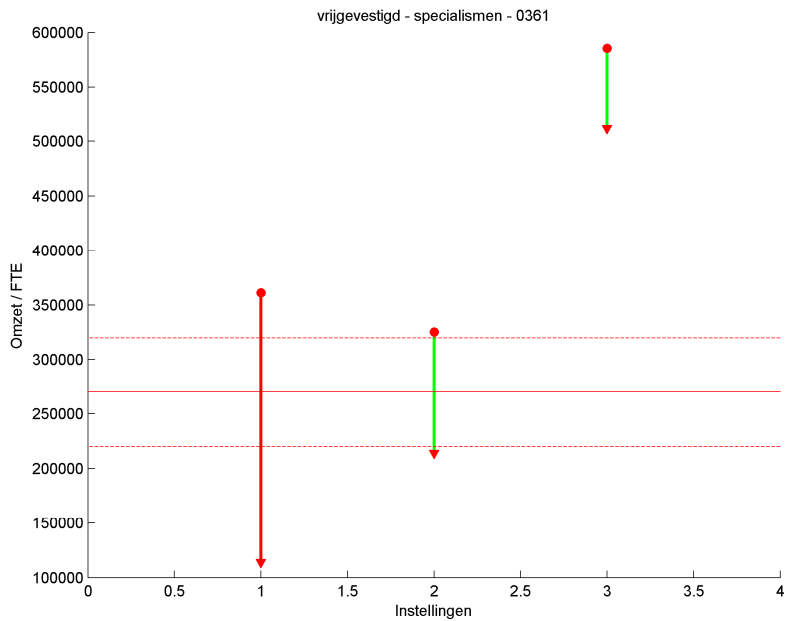
Figuur 97: Omzet per FTE ten opzichte van gemiddelde



Figuur 98: Omzet DBC 2011 (KPMG) en DOT 2012



Figuur 99: Omzetverschuiving van 2011 naar 2012



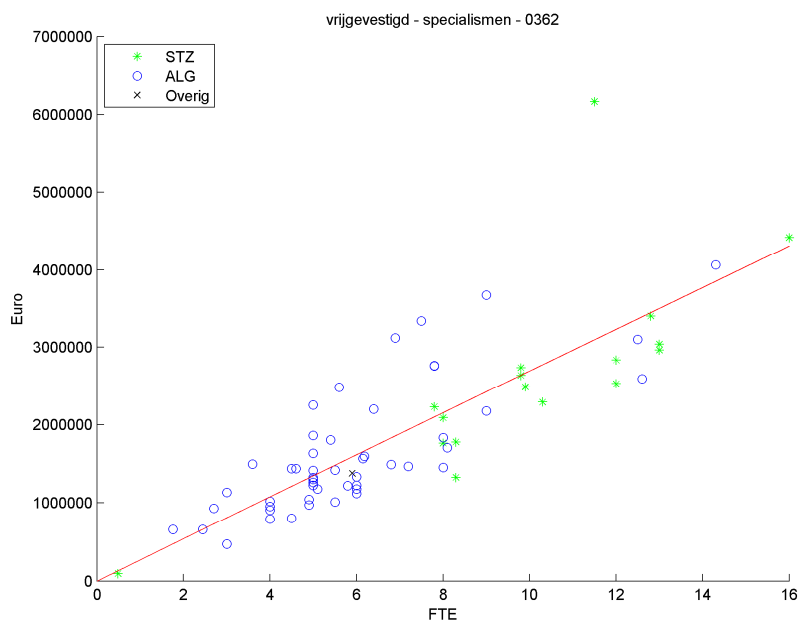
Figuur 100: Omzetverschuiving t.o.v. absolute waarde

Omzet per FTE

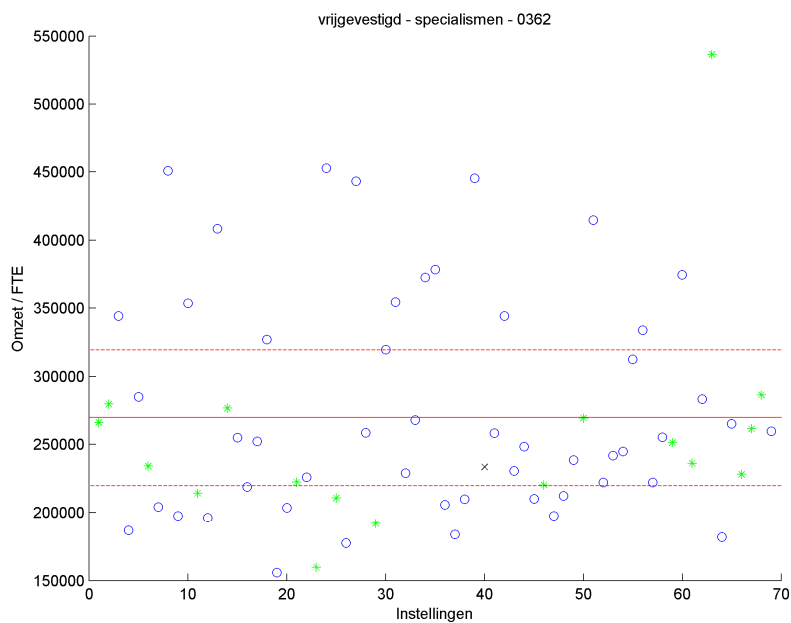
	< 220000	gemiddeld	> 320000
< 1 std	1	0	0
gemiddeld	1	0	1
> 1 std	0	0	0

Tabel 20: Uitbijters

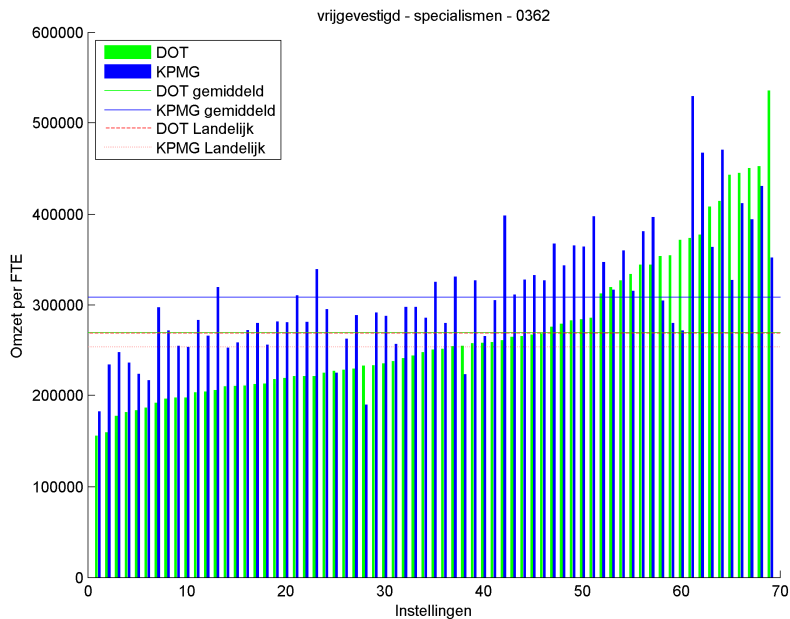
0362 - Radiologie



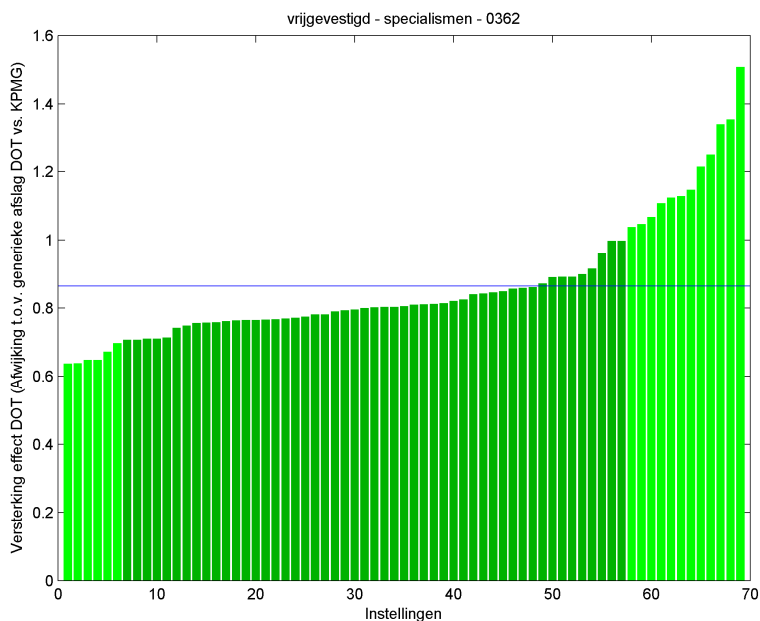
Figuur 101: Relatie honorariumomzet en FTE



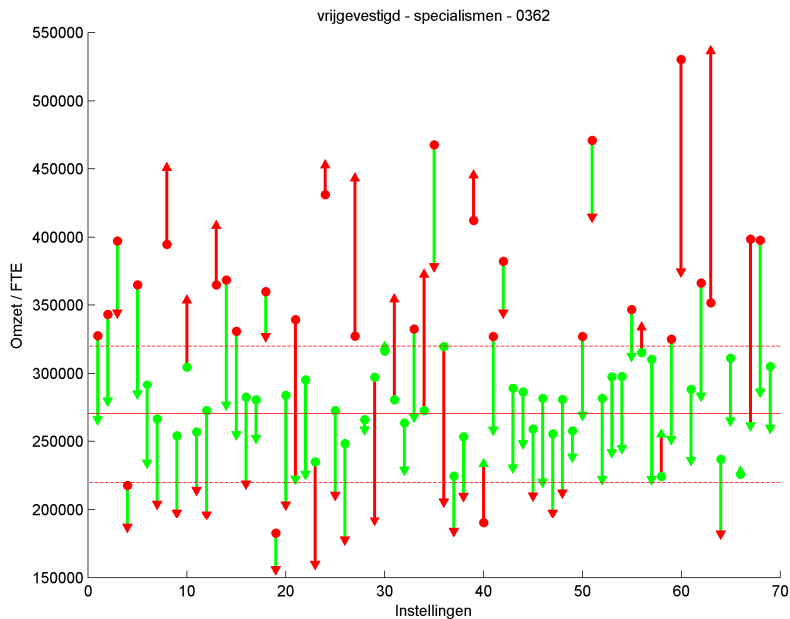
Figuur 102: Omzet per FTE ten opzichte van gemiddelde



Figuur 103: Omzet DBC 2011 (KPMG) en DOT 2012



Figuur 104: Omzetverschuiving van 2011 naar 2012



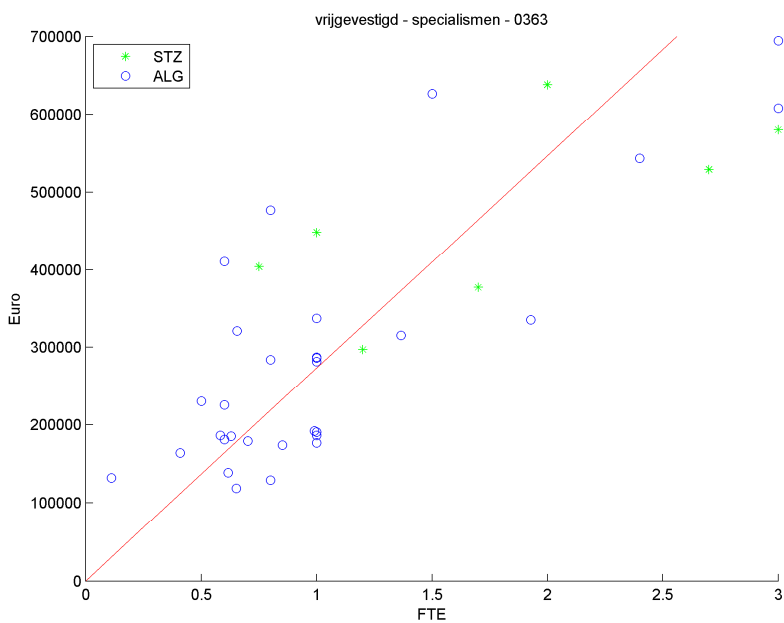
Figuur 105: Omzetverschuiving t.o.v. absolute waarde

Omzet per FTE

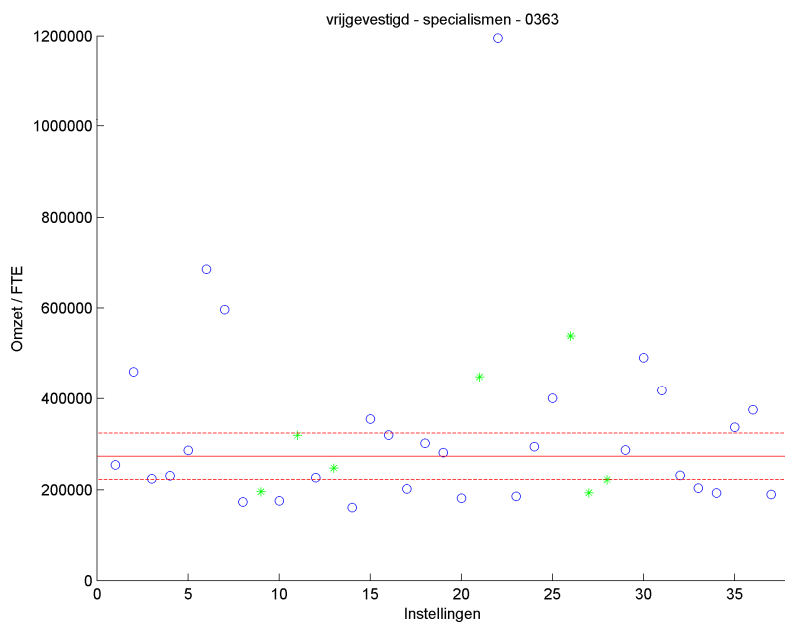
	< 220000	gemiddeld	> 320000
< 1 std	3	2	1
gemiddeld	16	30	5
> 1 std	0	2	10

Tabel 21: Uitbijters

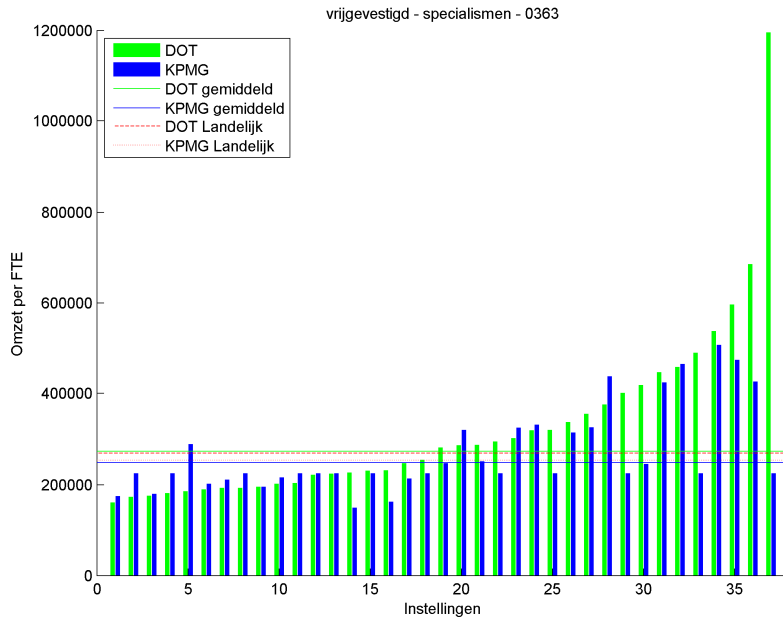
0363 - Nucleaire geneeskunde



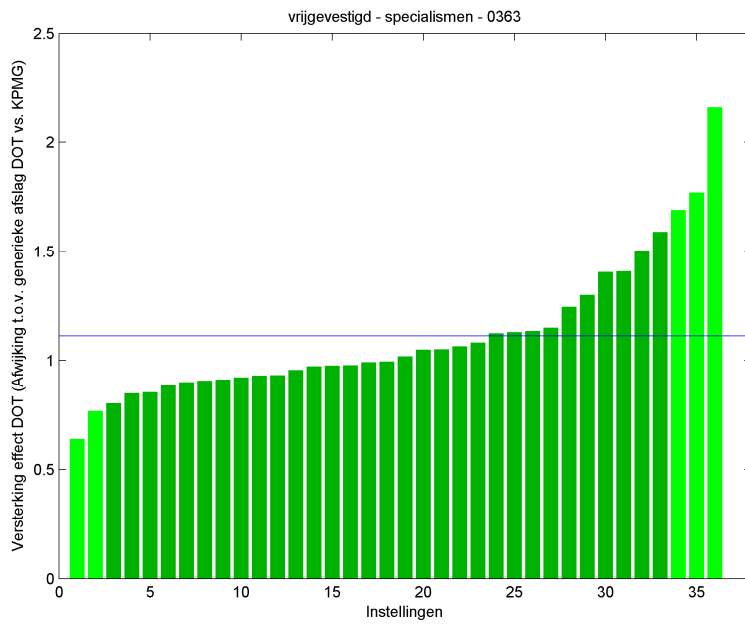
Figuur 106: Relatie honorariumomzet en FTE



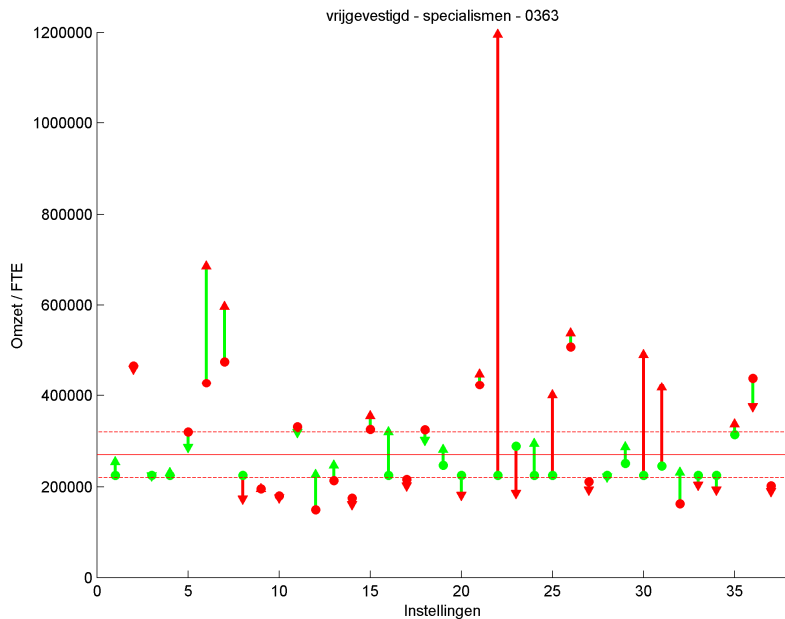
Figuur 107: Omzet per FTE ten opzichte van gemiddelde



Figuur 108: Omzet DBC 2011 (KPMG) en DOT 2012



Figuur 109: Omzetverschuiving van 2011 naar 2012



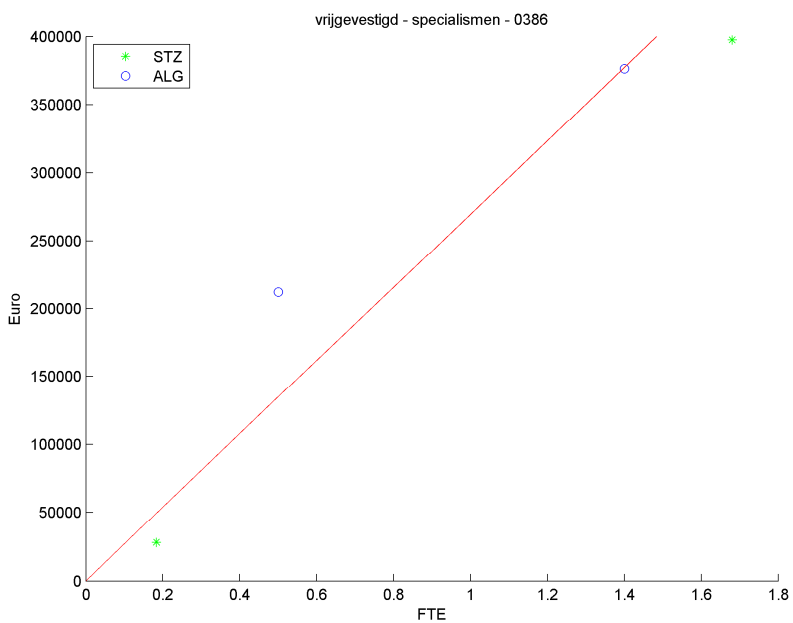
Figuur 110: Omzetverschuiving t.o.v. absolute waarde

Omzet per FTE

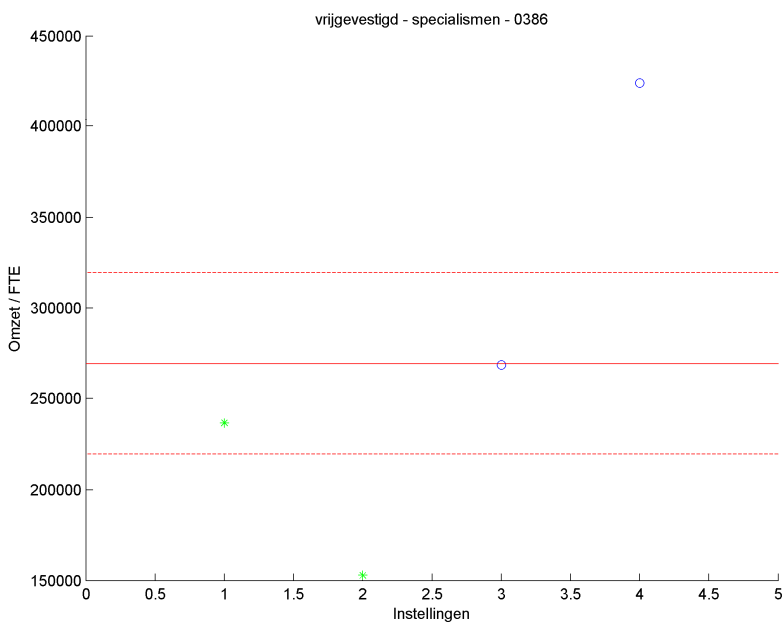
	< 220000	gemiddeld	> 320000
< 1 std	2	0	0
gemiddeld	9	14	8
> 1 std	0	0	4

Tabel 22: Uitbijters

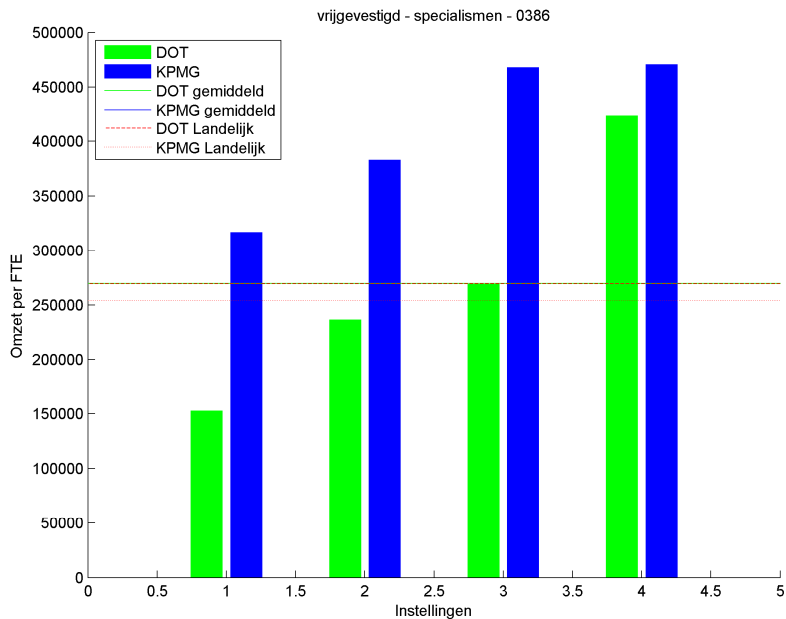
0386 - Klinische chemie



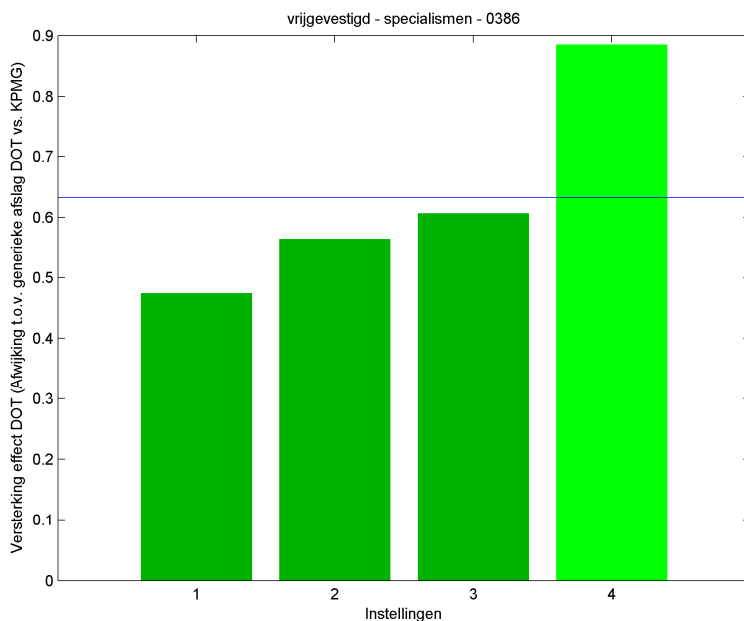
Figuur 111: Relatie honorariumomzet en FTE



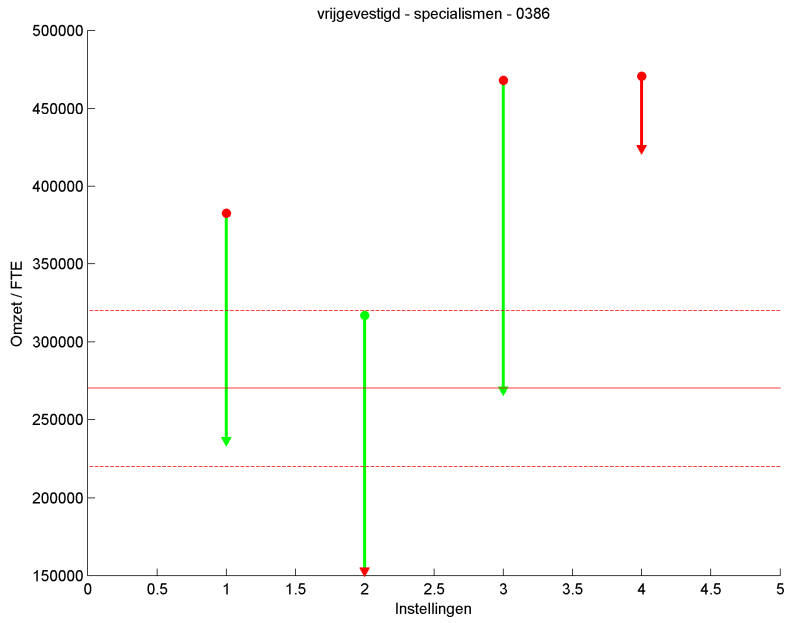
Figuur 112: Omzet per FTE ten opzichte van gemiddelde



Figuur 113: Omzet DBC 2011 (KPMG) en DOT 2012



Figuur 114: Omzetverschuiving van 2011 naar 2012



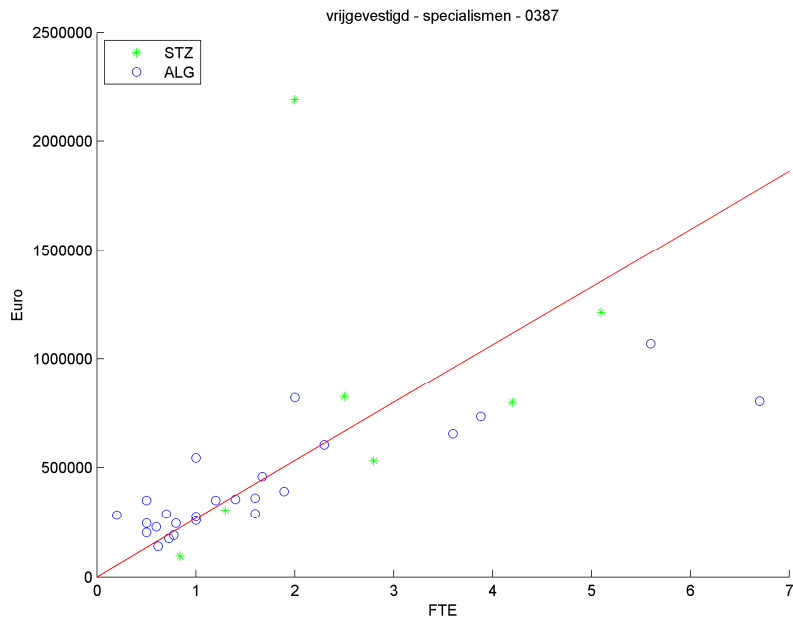
Figuur 115: Omzetverschuiving t.o.v. absolute waarde

Omzet per FTE

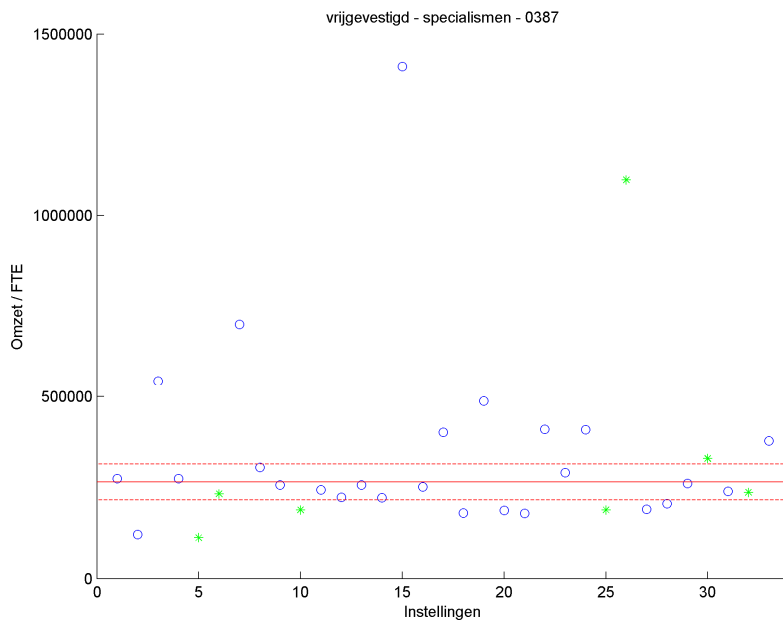
	< 220000	gemiddeld	> 320000
< 1 std	0	0	0
gemiddeld	1	2	0
> 1 std	0	0	1

Tabel 23: Uitbijters

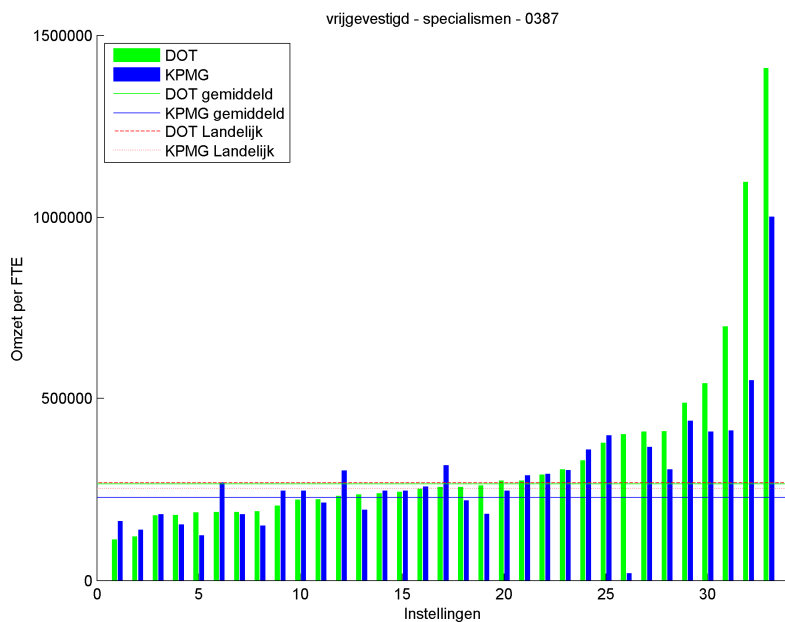
0387 - Medische microbiologie



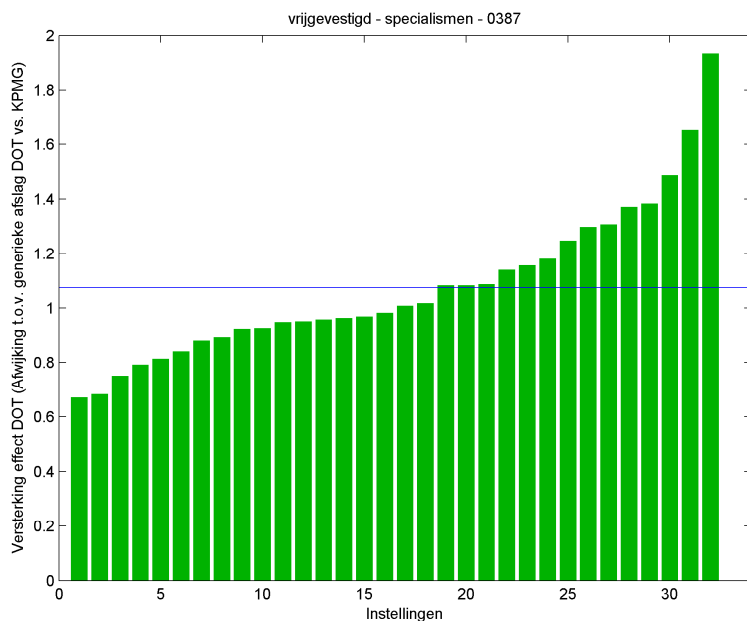
Figuur 116: Relatie honorariumomzet en FTE



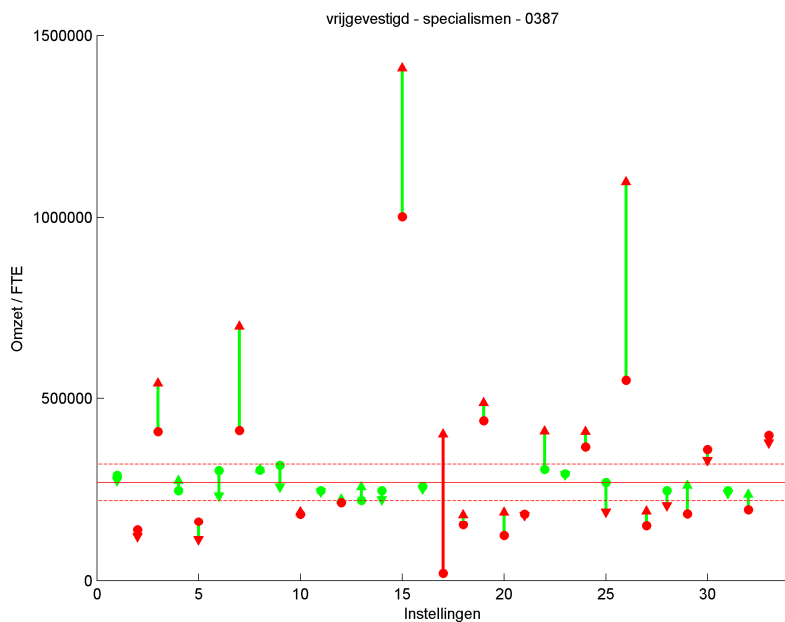
Figuur 117: Omzet per FTE ten opzichte van gemiddelde



Figuur 118: Omzet DBC 2011 (KPMG) en DOT 2012



Figuur 119: Omzetverschuiving van 2011 naar 2012



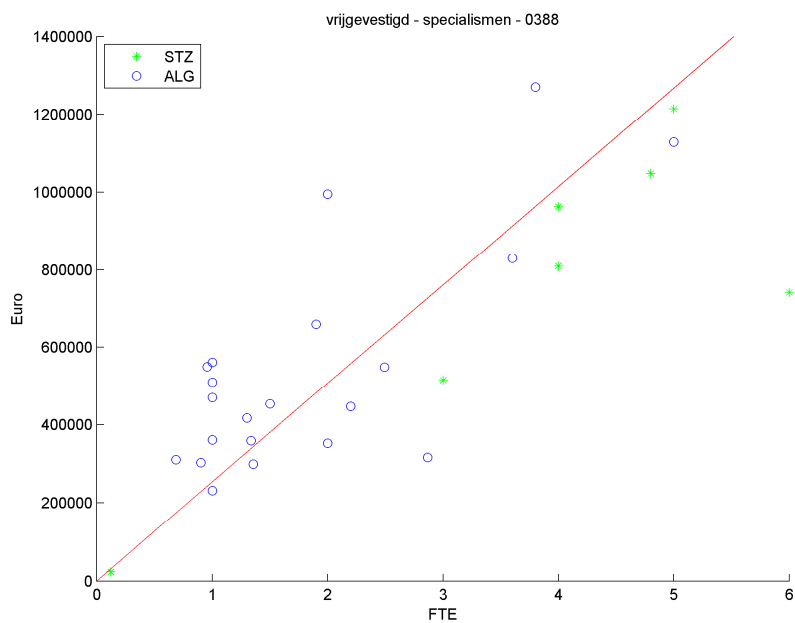
Figuur 120: Omzetverschuiving t.o.v. absolute waarde

Omzet per FTE

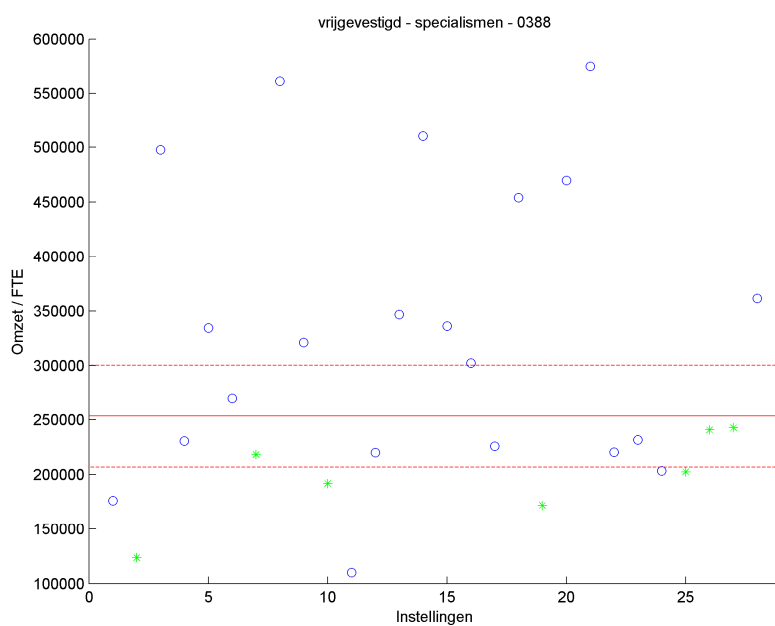
	< 220000	gemiddeld	> 320000
< 1 std	0	0	0
gemiddeld	9	14	9
> 1 std	0	0	1

Tabel 24: Uitbijters

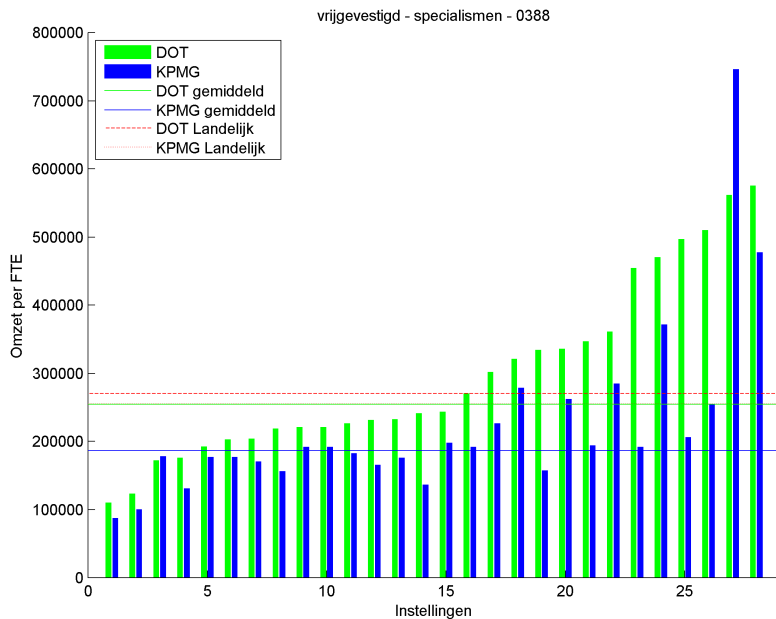
0388 - Pathologie



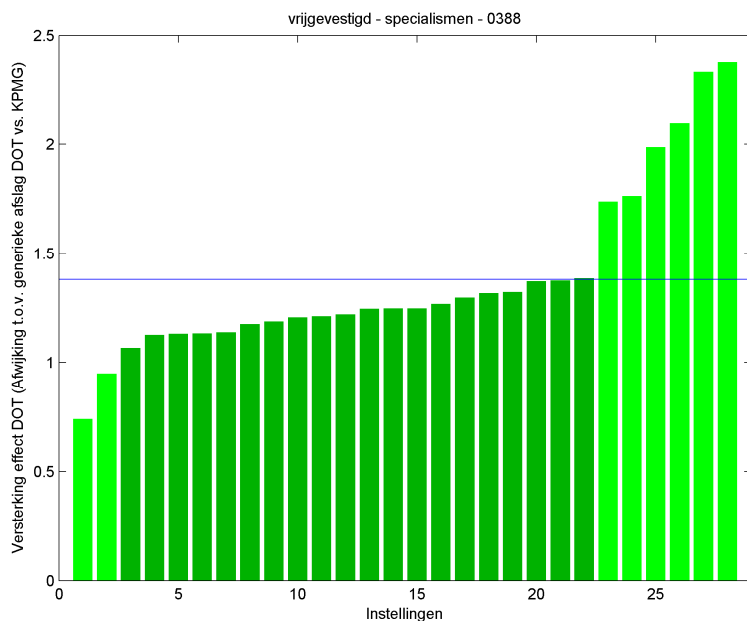
Figuur 121: Relatie honorariumomzet en FTE



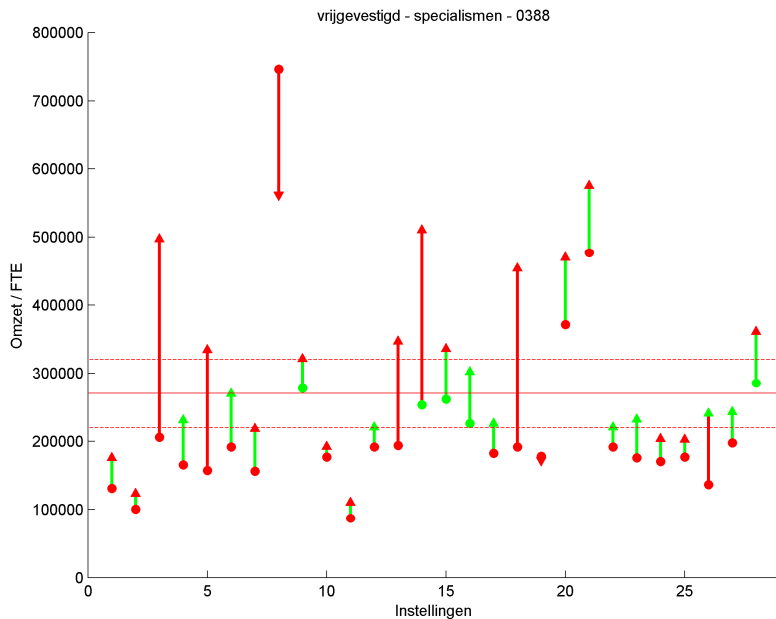
Figuur 122: Omzet per FTE ten opzichte van gemiddelde



Figuur 123: Omzet DBC 2011 (KPMG) en DOT 2012



Figuur 124: Omzetverschuiving van 2011 naar 2012



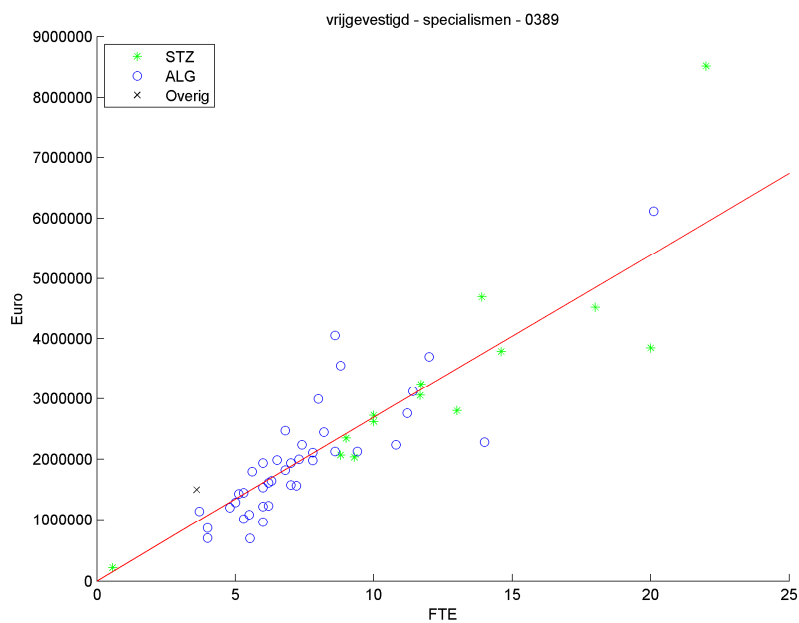
Figuur 125: Omzetverschuiving t.o.v. absolute waarde

Omzet per FTE

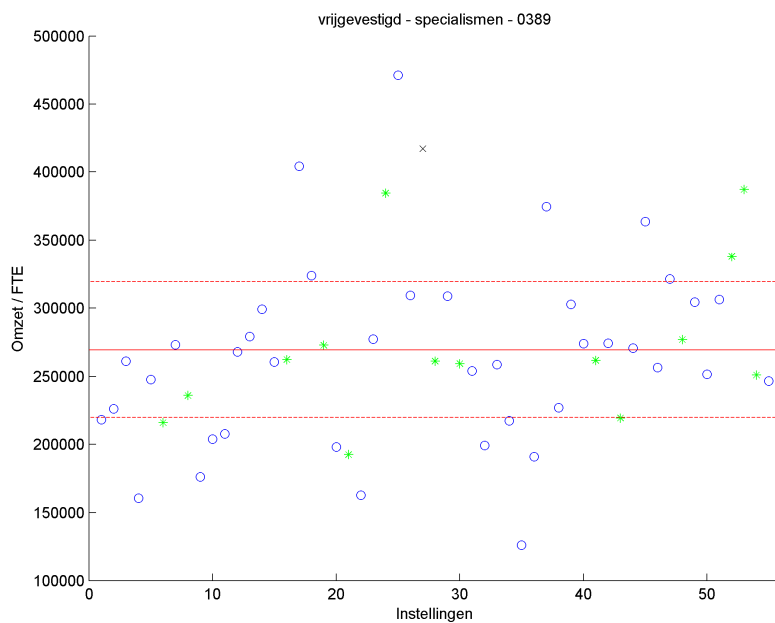
	< 220000	gemiddeld	> 320000
< 1 std	1	0	1
gemiddeld	7	8	5
> 1 std	0	1	5

Tabel 25: Uitbijters

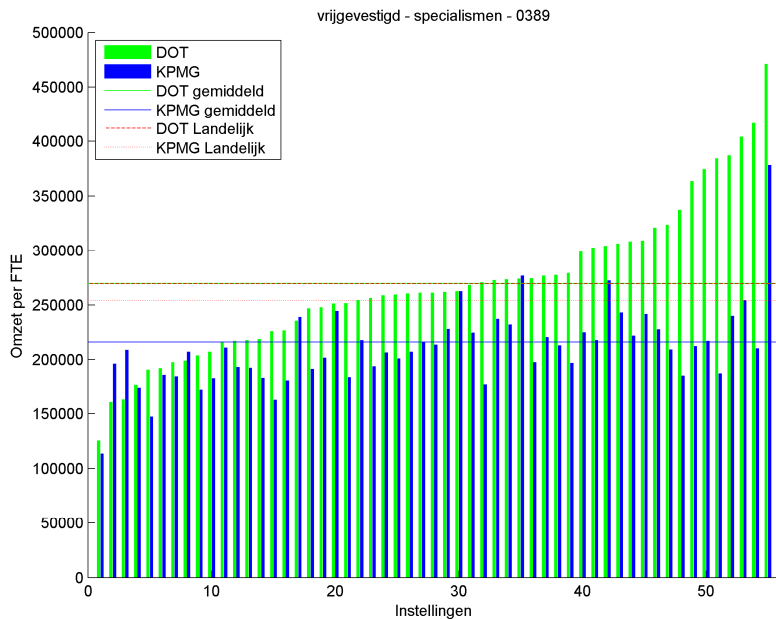
0389 - Anesthesiologie



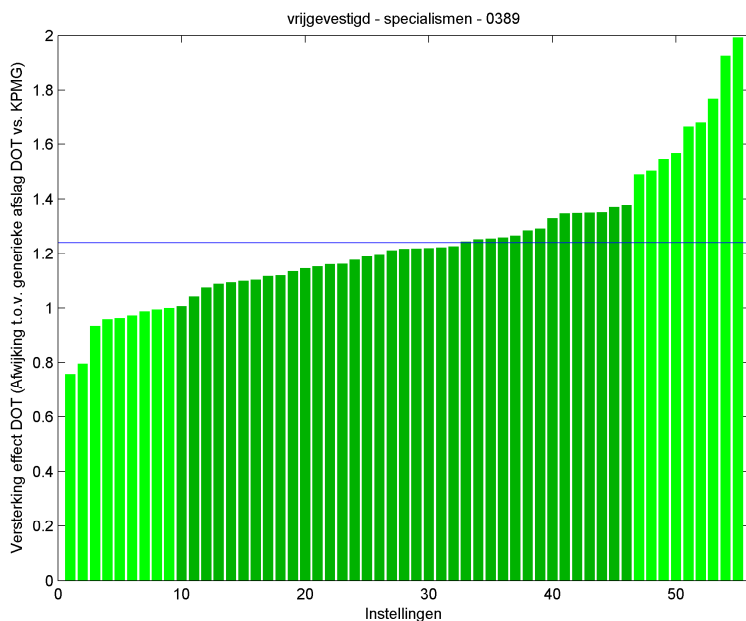
Figuur 126: Relatie honorariumomzet en FTE



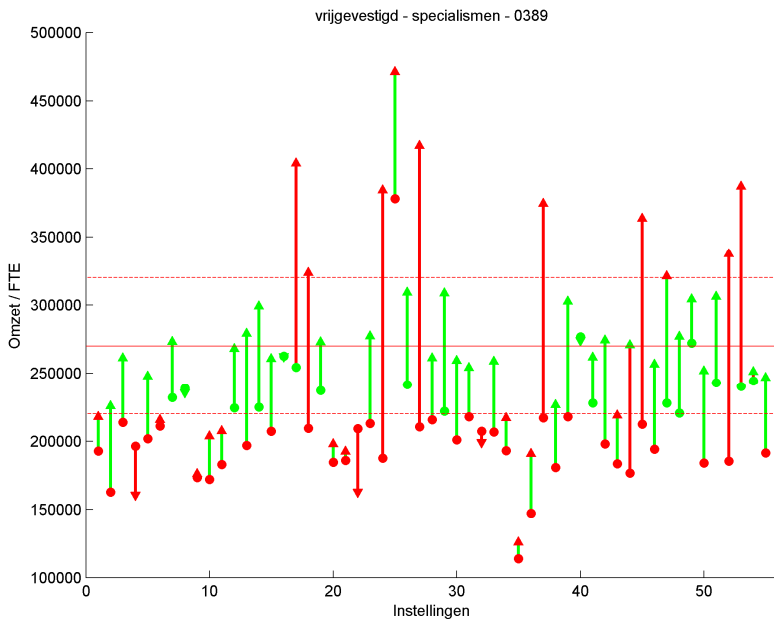
Figuur 127: Omzet per FTE ten opzichte van gemiddelde



Figuur 128: Omzet DBC 2011 (KPMG) en DOT 2012



Figuur 129: Omzetverschuiving van 2011 naar 2012



Figuur 130: Omzetverschuiving t.o.v. absolute waarde

Omzet per FTE

	< 220000	gemiddeld	> 320000
< 1 std	5	4	0
gemiddeld	9	26	2
> 1 std	0	1	8

Tabel 26: Uitbijters